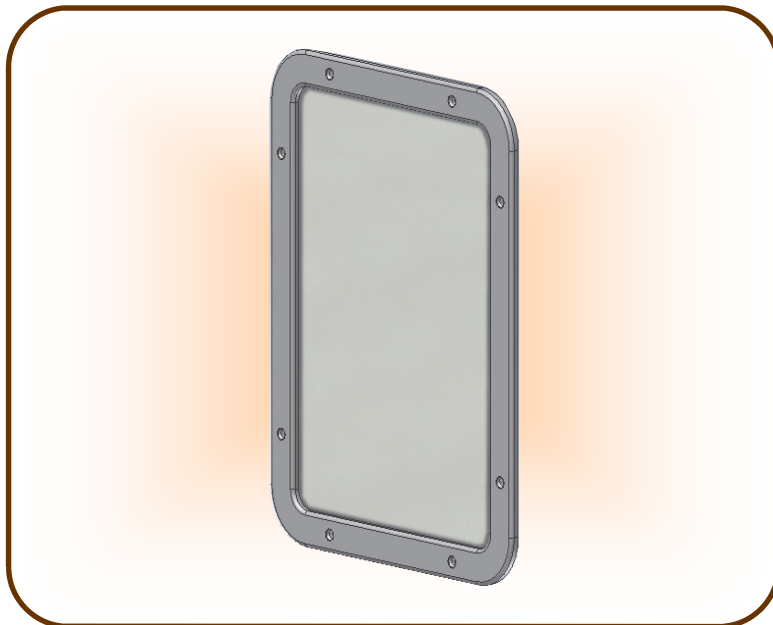


Mirror- Wall Mount

JCP Models

	<u>Description</u>
J-1-0501	Large Mirror (as shown)
J-1-0502	Large Mirror w/ Back Plate
J-1-0503	Large Mirror w/ Embed
J-1-0504	Small Mirror
J-1-0505	Small Mirror w/ Back Plate
J-1-0506	Small Mirror w/ Embed



JCP Specifications: The overall size of the large mirror assembly is 12-3/8" x 16-3/8" x 5/16" thick, with the actual mirror area of 10" x 14". The mirror panel is 20 gauge stainless steel polished to a mirror finish approximating that of glass. The mirror frame is 14 gauge steel with a satin chrome finish.

The mirror, frame, and screws are shipped separate for field assembly and installation.

The assembly of the mirror and frame in the field is with 1/4-20 flat head Torx security screws that are included. A security screw driver bit is required but is not included. The wall must be flat and plumb with tapped holes for the mounting screws. It is recommended that security caulking be applied around the mirror frame to prevent objects from being inserted between the wall and the mirror frame. Security caulk is not included.

An optional back plate is 12-3/8" x 16-3/8" x 7 gauge HRPO steel, primed painted, with pre tapped holes for the mirror assembly and three 7/16" dia. holes countersunk for flathead expansion anchors to mount the back plate to the wall. The expansion anchors are provided by the installer. The back plate is shipped separate and must be installed flat and plumb against the wall that is fully grouted.

An optional embed is the above referenced 12-3/8" x 16-3/8" x 7 gauge HRPO steel back plate, primed painted, with three 12 gauge HRPO steel x 4" anchor straps for embedding into the wall. The back plate is shipped separate and must be installed by the mason flat and plumb against the wall with a #4 rebar (provided by others) inserted through each anchor, and then the wall must be fully grouted. Clean any grout or other material out of the mirrors mounting holes. Walls must be flat and true within 1/16" +/- for the proper installation of the mirror.

The overall size of the small mirror assembly is 10" x 11-1/2" x 5/16" thick, with the actual mirror area of 8" x 9-1/2". The mirror panel is 20 gauge stainless steel polished to a mirror finish approximating that of glass. The mirror frame is 14 gauge steel with a satin chrome finish. The optional small mirror back plate and embed are as described above, sized to the small mirror dimensions.

JAILS CORRECTIONAL PRODUCTS A Division of **FABCOR, Inc.**

350 South Ohio Street, P.O. Box 58
Minster, Ohio 45865
www.fabcor.com

Phone: (419) 628- 4428
Fax: (419) 628- 2899
E-mail: jails@fabcor.com

Equipment Assembly

EA-01.01

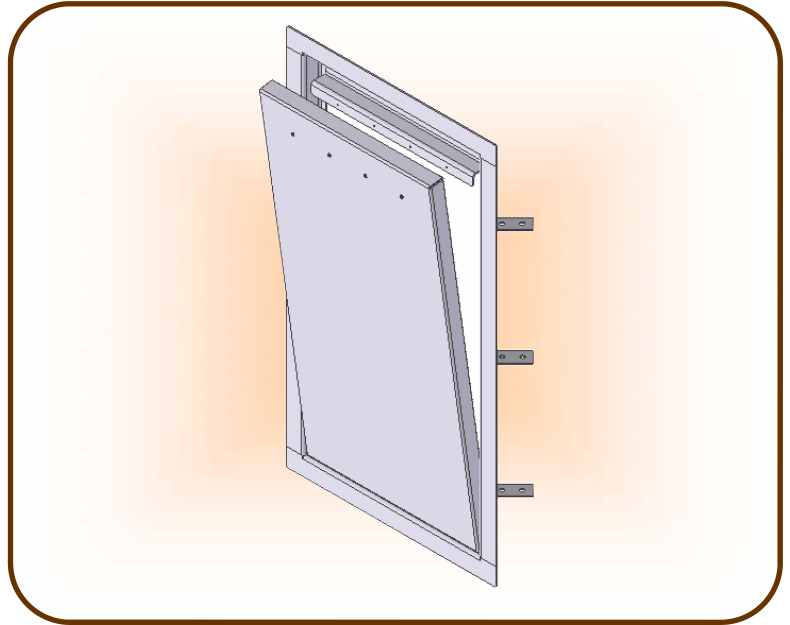
Revision C

©2003 Fabcor, Inc.

Access Panel- Wall or Ceiling Mount– Lift Out

ACCESS PANEL

<u>JCP Models</u>	<u>Description</u>
J-1-1001	24" x 24" Embedded
J-1-1002	24" x 36" Embedded
J-1-1003	24" x 48" Embedded (shown)
J-1-1004	24" x 72" Embedded
J-1-1005	Custom Size Embedded
J-1-1006	24" x 24" Non Embedded
J-1-1007	24" x 36" Non Embedded
J-1-1008	24" x 48" Non Embedded
J-1-1009	24" x 72" Non Embedded
J-1-1010	Custom Size Non Embedded
J-1-1011	24" x 24" No Anchorage
J-1-1012	24" x 36" No Anchorage
J-1-1013	24" x 48" No Anchorage
J-1-1014	24" x 72" No Anchorage
J-1-1015	Custom Size No Anchorage



JCP Specifications: Access panel frames are fabricated from 7 gauge HRPO steel and the doors are fabricated from 10 gauge HRPO steel. The frame has a depth of 2-3/8" and flanges of 2-1/2". There will be a 1/8" clearance between the door and frame. The door is 2" thick with flanges bent around to the back on all sides for rigidity. The door will sit back 1/8" from the face of the frame.

The lift out access panels are assembled complete with the door sitting in the frame secured by 1/4-20 button head Torx w/ pin bolts at 8" o/c across the top. All materials receive one shop coat of our standard primer. The lift out access panels are shipped to the jobsite fully assembled and ready for installation.

For embedded applications specify access panels with embedded anchors. The 10 gauge HRPO steel x 2" x 4-1/2" long anchors are located in the corner of the frame jambs at 16" o/c, and designed to lay between the block courses. The installer will lay the door and frame unit on a block course and lay the block around the frame and anchors. The installer will insert a #4 rebar (provided by installer) through each anchor and verify the frame is square, plumb and true in the opening. The block wall must be grouted solid for proper anchorage.

For non embedded or existing applications specify access panels with non embedded anchorage. 5/16" diameter countersunk holes will be located on the face of the frame jambs, header and sill at 12" o/c. The installer will provide the 1/4" diameter pin bolt drive to be inserted into each hole. Place the access panel frame in the wall or ceiling opening and drill a hole at each anchor location, insert and tighten each anchor. The block wall must be grouted solid for proper anchorage.

For plate wall or ceiling applications specify access panel with no anchorage. The installer places the access panel frame in the wall or ceiling opening and welds the edge of the frame to the plate wall or ceiling.

Correctional access panels should be specified at all locations inmates have access to. The above sizes refer to the opening in the frame for the door of each access panel. The overall frame size would be 5" larger vertically and horizontally.

JAILS CORRECTIONAL PRODUCTS A Division of **FABCOR, Inc.**

350 South Ohio Street, P.O. Box 58
Minster, Ohio 45865
www.fabcor.com

Phone: (419) 628- 4428
Fax: (419) 628- 2899
E-mail: jails@fabcor.com

Equipment Assembly

EA-02.01

Revision C

©2003 Fabcor, Inc.

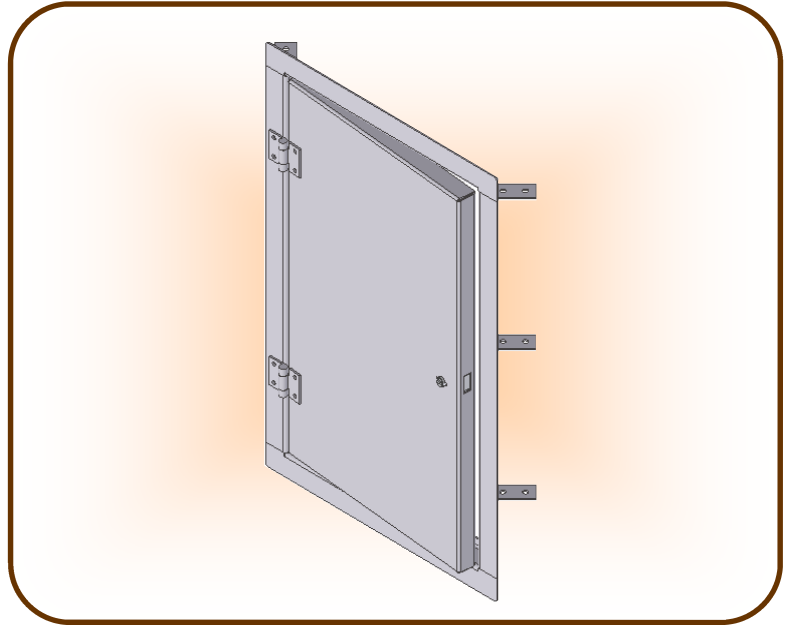
Access Panel- Wall or Ceiling Mount– Swing

ACCESS PANEL

JCP Models

Description

J-1-1051	24" x 24" Embedded
J-1-1052	24" x 36" Embedded
J-1-1053	24" x 48" Embedded (shown)
J-1-1054	24" x 72" Embedded
J-1-1055	Custom Size Embedded
J-1-1056	24" x 24" Non Embedded
J-1-1057	24" x 36" Non Embedded
J-1-1058	24" x 48" Non Embedded
J-1-1059	24" x 72" Non Embedded
J-1-1060	Custom Size Non Embedded
J-1-1061	24" x 24" No Anchorage
J-1-1062	24" x 36" No Anchorage
J-1-1063	24" x 48" No Anchorage
J-1-1064	24" x 72" No Anchorage
J-1-1065	Custom Size No Anchorage



JCP Specifications: Access panel frames are fabricated from 7 gauge HRPO steel and the doors are fabricated from 10 gauge HRPO steel. The frame has a depth of 2-3/8" and flanges of 2-1/2". There will be a 1/8" clearance between the door and frame. The door is 2" thick with flanges bent around to the back on all sides for rigidity. The door will be flush with the face of the frame.

The access panels are assembled complete with the door attached to the frame with two (2) JCP J-7-9201 3" full surface weld on hinges. All materials receive one shop coat of our standard primer. The access panels are shipped to the jobsite fully assembled and ready for installation.

For embedded applications specify access panels with embedded anchors. The 10 gauge HRPO steel x 2" x 4-1/2" long anchors are located in the corner of the frame jambs at 16" o/c, and designed to lay between the block courses. The installer will lay the door and frame unit on a block course and lay the block around the frame and anchors. The installer will insert a #4 rebar (provided by installer) through each anchor and verify the frame is square, plumb and true in the opening. The block wall must be grouted solid for proper anchorage.

For non embedded or existing applications specify access panels with non embedded anchorage. 5/16" diameter holes will be located on the face of the frame jambs, header and sill at 12" o/c. The installer will provide the 1/4" diameter pin bolt drives to be inserted into each hole. Place the access panel frame in the wall or ceiling opening and drill a hole at each anchor location, insert and tighten each anchor. The block wall must be grouted solid for proper anchorage.

For plate wall or ceiling applications specify access panel with no anchorage. The installer places the access panel frame in the wall or ceiling opening and welds the edge of the frame to the plate wall or ceiling.

Correctional access panels should be specified at all locations inmates have access to. The above sizes refer to the opening in the frame for the door of each access panel. The overall frame size would be 5" larger vertically and horizontally.

Security locks are not provided with the access panel and must be purchased separately. JCP will provide lock mounting preparations if furnished with the template for the lock.

JAILS CORRECTIONAL PRODUCTS A Division of **FABCOR, Inc.**

350 South Ohio Street, P.O. Box 58
Minster, Ohio 45865
www.fabcor.com

Phone: (419) 628- 4428
Fax: (419) 628- 2899
E-mail: jails@fabcor.com

Equipment Assembly

EA-02.02

Revision C

©2003 Fabcor, Inc.

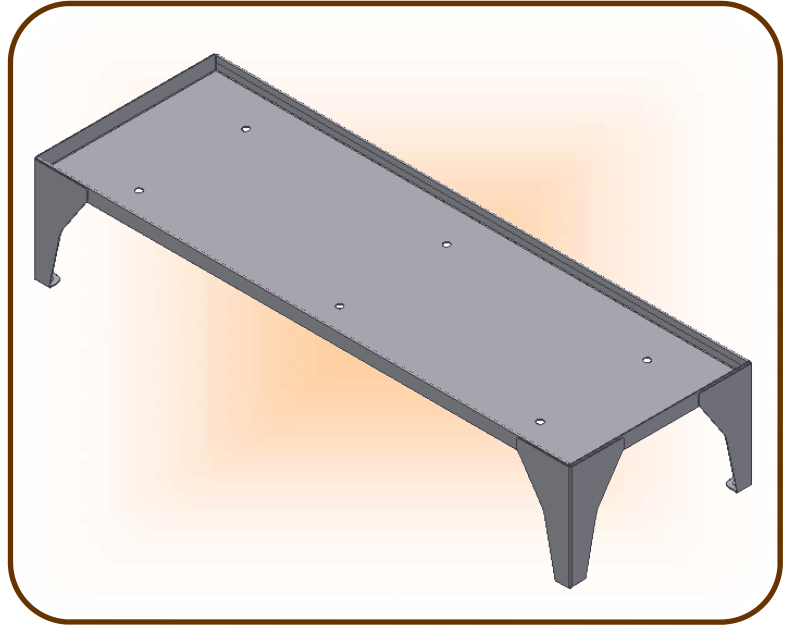
Bunk– Single Floor Mount

BUNK

JCP Models

Description

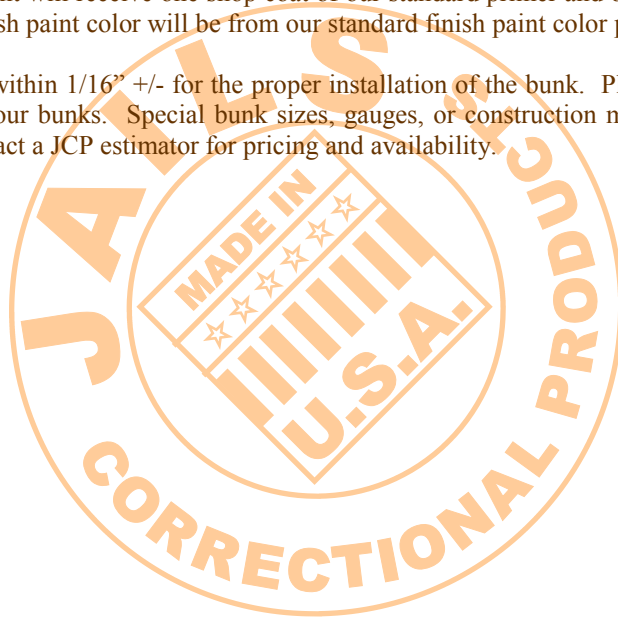
J-1-8501	27" x 75" (prime paint)
J-1-8502	27" x 80" (prime paint)
J-1-8503	30" x 75" (prime paint)
J-1-8504	30" x 80" (prime paint)
J-1-8505	36" x 75" (prime paint)
J-1-8506	36" x 80" (prime paint)
J-1-8507	27" x 75" (finish paint)
J-1-8508	27" x 80" (finish paint)
J-1-8509	30" x 75" (finish paint)
J-1-8510	30" x 80" (finish paint)
J-1-8511	36" x 75" (finish paint)
J-1-8512	36" x 80" (finish paint)



JCP Specifications: Bunk pans are fabricated from 11 gauge HRPO steel and have a 2-1/4" hemmed lip on the front and back edge for additional strength. The sides of the pan have a 2-1/4" formed lip and the bottom of the pan has six 1" diameter ventilation holes. The four legs of the bunk are fabricated from 10 gauge HRPO steel with an integrated mounting pad at the bottom with a 1/2" diameter hole for a 3/8" diameter anchor that is supplied by the installer. The height of the bunk pan is 16" from the finished floor. All bunks will shipped fully welded and will receive one shop coat of our standard primer.

Bunks specified to receive finish paint will receive one shop coat of our standard primer and one shop coat of our standard finish paint with a textured finish. Finish paint color will be from our standard finish paint color palette.

Note: Floors must be flat and true within 1/16" +/- for the proper installation of the bunk. Please refer to JCP catalog section EA-04 for optional accessories for our bunks. Special bunk sizes, gauges, or construction may be available on a per project basis for additional cost, please contact a JCP estimator for pricing and availability.



JAILS CORRECTIONAL PRODUCTS A Division of **FABCOR, Inc.**

350 South Ohio Street, P.O. Box 58
Minster, Ohio 45865
www.fabcor.com

Phone: (419) 628- 4428
Fax: (419) 628- 2899
E-mail: jails@fabcor.com

Equipment Assembly

EA-03.01

Revision C

©2003 Fabcor, Inc.

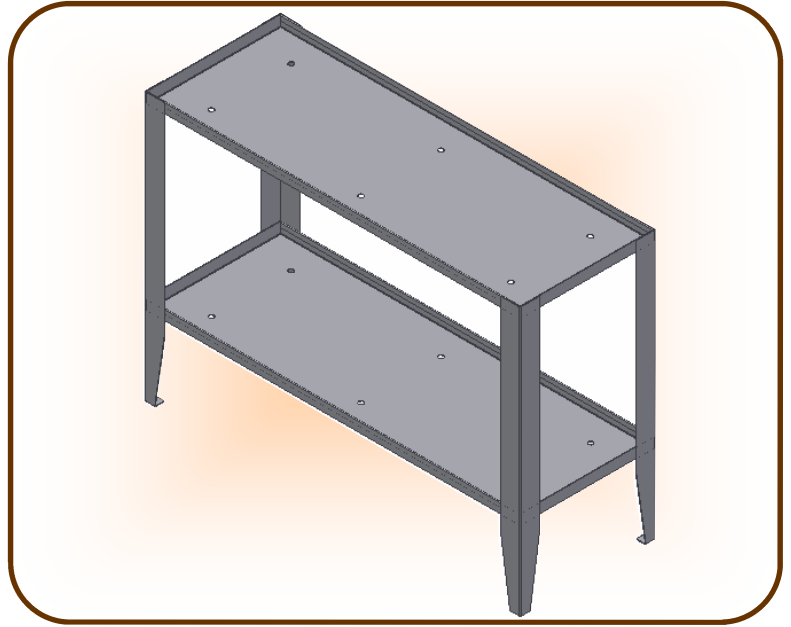
Bunk– Double Floor Mount

BUNK

JCP Models

Description

J-1-8531	27" x 75" (broke down, prime paint)
J-1-8532	27" x 80" (broke down, prime paint)
J-1-8533	30" x 75" (broke down, prime paint)
J-1-8534	30" x 80" (broke down, prime paint)
J-1-8535	36" x 75" (broke down, prime paint)
J-1-8536	36" x 80" (broke down, prime paint)
J-1-8537	27" x 75" (full weld, prime paint)
J-1-8538	27" x 80" (full weld, prime paint)
J-1-8539	30" x 75" (full weld, prime paint)
J-1-8540	30" x 80" (full weld, prime paint)
J-1-8541	36" x 75" (full weld, prime paint)
J-1-8542	36" x 80" (full weld, prime paint)
J-1-8543	27" x 75" (full weld, finish paint)
J-1-8544	27" x 80" (full weld, finish paint)
J-1-8545	30" x 75" (full weld, finish paint)
J-1-8546	30" x 80" (full weld, finish paint)
J-1-8547	36" x 75" (full weld, finish paint)
J-1-8548	36" x 80" (full weld, finish paint)

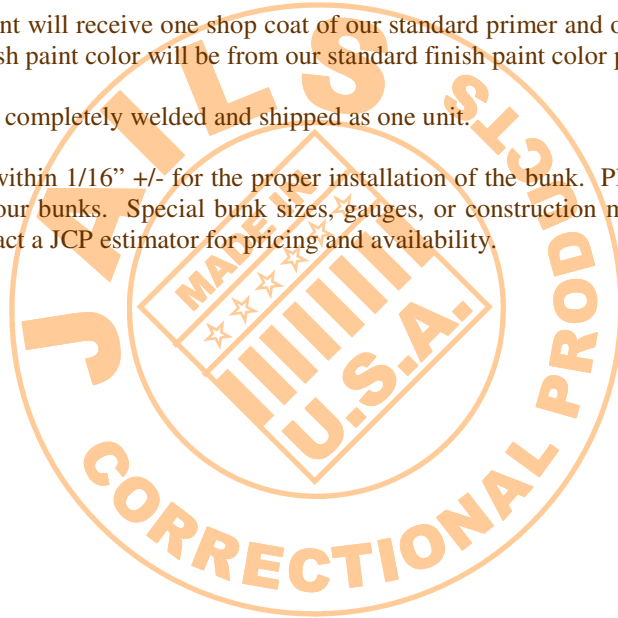


JCP Specifications: Bunk pans are fabricated from 11 gauge HRPO steel and have a 2-1/4" hemmed lip on the front and back edge for additional strength. The sides of the pan have a 2-1/4" formed lip and the bottom of the pan has six 1" diameter ventilation holes. The four legs of the bunk are fabricated from 10 gauge HRPO steel with an integrated mounting pad at the bottom with a 1/2" diameter hole for a 3/8" diameter anchor that is supplied by the installer. The height of the bottom bunk pan is 16" from the finished floor and the top pan is 52" from the finished floor. All bunks will shipped broke down and will receive one shop coat of our standard primer. Field assembly and welding is by the installer.

Bunks specified to receive finish paint will receive one shop coat of our standard primer and one shop coat of our standard finish paint with a textured finish. Finish paint color will be from our standard finish paint color palette.

Bunks specified as full weld shall be completely welded and shipped as one unit.

Note: Floors must be flat and true within 1/16" +/- for the proper installation of the bunk. Please refer to JCP catalog section EA-04 for optional accessories for our bunks. Special bunk sizes, gauges, or construction may be available on a per project basis for additional cost, please contact a JCP estimator for pricing and availability.



JAILS CORRECTIONAL PRODUCTS A Division of **FABCOR, Inc.**

350 South Ohio Street, P.O. Box 58
Minster, Ohio 45865
www.fabcor.com

Phone: (419) 628- 4428
Fax: (419) 628- 2899
E-mail: jails@fabcor.com

Equipment Assembly

EA-03.02

Revision C

©2003 Fabcor, Inc.

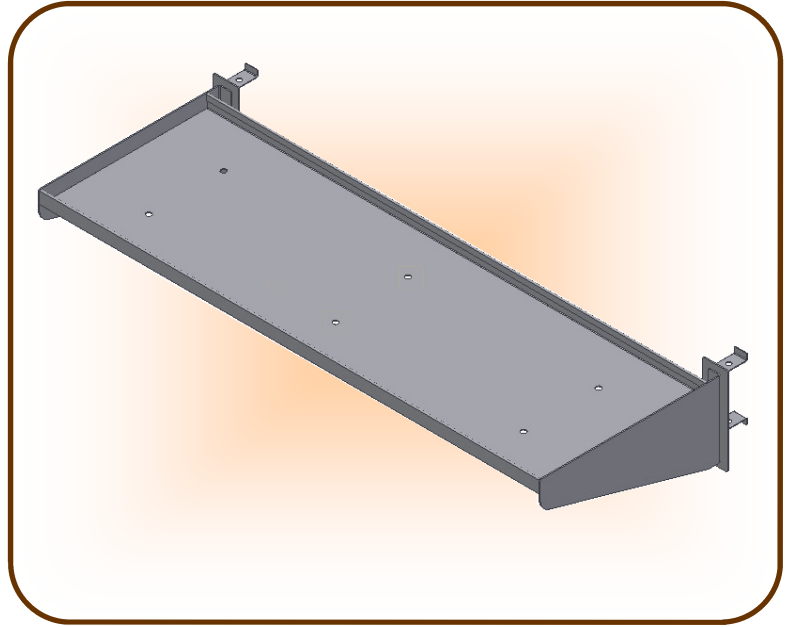
Bunk– Single Wall Mount

BUNK

JCP Models

Description

J-1-8701	27" x 75" (prime paint)
J-1-8702	27" x 80" (prime paint)
J-1-8703	30" x 75" (prime paint)
J-1-8704	30" x 80" (prime paint)
J-1-8705	36" x 75" (prime paint)
J-1-8706	36" x 80" (prime paint)
J-1-8707	27" x 75" (finish paint)
J-1-8708	27" x 80" (finish paint)
J-1-8709	30" x 75" (finish paint)
J-1-8710	30" x 80" (finish paint)
J-1-8711	36" x 75" (finish paint)
J-1-8712	36" x 80" (finish paint)



JCP Specifications: Bunk pans are fabricated from 11 gauge HRPO steel and have a 2-1/4" hemmed lip on the front and back edge for additional strength. The bottom of the pan has six 1" diameter ventilation holes. The side brackets are fabricated from 7 gauge HRPO steel and are 12" high and have a 2" return that is field welded to the embed by the installer. The 4" x 14" embedded anchors are fabricated from 7 gauge HRPO steel and have two 12 gauge HRPO steel straps per anchor. The height of the bunk pan is 16" from the finished floor. All bunks will shipped fully welded and will receive one shop coat of our standard primer.

The installer of the embeds will place the embed on the appropriate block course and lay the block in and around the embed straps. The installer will insert a #4 rebar (provided by installer) through each anchor strap and verify that the embed is flat and true at the correct spacing for the bunk side brackets. The block wall must be grouted solid for proper anchorage.

Bunks specified to receive finish paint will receive one shop coat of our standard primer and one shop coat of our standard finish paint with a textured finish. Finish paint color will be from our standard finish paint color palette.

Note: Walls must be flat and true within 1/16" +/- for the proper installation of the bunk. Please refer to JCP catalog section EA-04 for optional accessories for our bunks. Special bunk sizes, gauges, or construction may be available on a per project basis for additional cost, please contact a JCP estimator for pricing and availability.

JAILS CORRECTIONAL PRODUCTS A Division of **FABCOR, Inc.**

350 South Ohio Street, P.O. Box 58
Minster, Ohio 45865
www.fabcor.com

Phone: (419) 628- 4428
Fax: (419) 628- 2899
E-mail: jails@fabcor.com

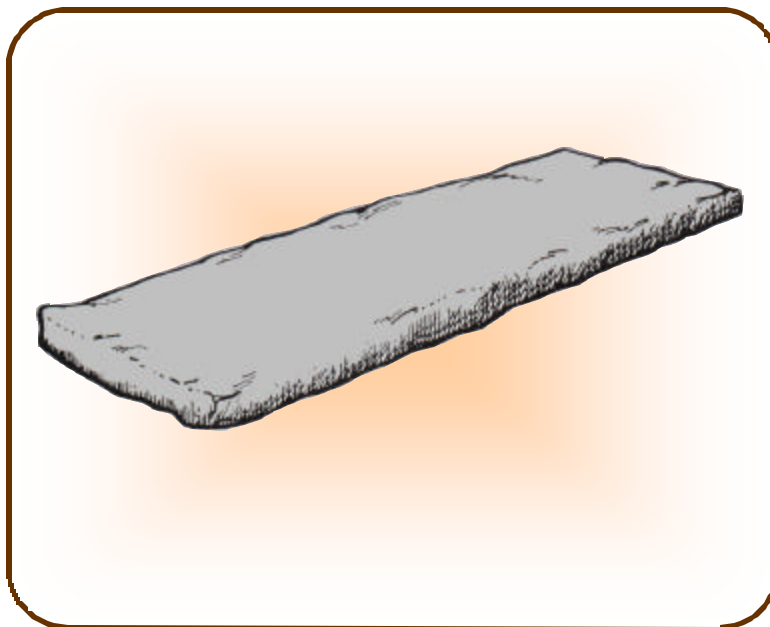
Equipment Assembly

EA-03.03

Revision C

©2003 Fabcor, Inc.

<u>JCP Models</u>	<u>Description</u>
J-1-8601	25" x 75" x 4"
J-1-8602	30" x 75" x 4"
J-1-8603	31" x 77" x 4"
J-1-8604	36" x 75" x 4"
J-1-8605	36" x 80" x 4"
J-1-8606	25" x 75" x 6"
J-1-8607	30" x 75" x 6"
J-1-8608	36" x 75" x 6"
J-1-8609	36" x 80" x 6"
J-1-8610	39" x 75" x 6"
J-1-8611	39" x 80" x 6"



JCP Specifications: The Core of the mattress is 100% polyester, 12 oz. per board foot density batting. The flame resistant characteristics are inherent in the polymer and are not the result of surface treatments. The mattress is resistant to moisture, mildew, common cleaning materials, hypo allergenic and odor free. The cover is a heavy duty vinyl laminate consisting of two layers of vinyl bonded to a tough synthetic scrim. The flame resistant and antibacterial properties in the fabric can not be worn away, and the dark green color does not show dirt easily. All Seams face the inside of the mattress except for the end closing seam. Use of double needle lock stitch sewn all around with heavy gauge nylon thread for added strength and durability. The mattress is UL Classified and meets their continuous rigorous testing, also passing the DOC Federal Flammability Standard FF-4-72, cigarette ignition resistance standard DFR 1632, California TB 106.

<u>Test</u>	<u>Purpose of Test</u>	<u>Criteria</u>	<u>Test Results</u>
California Technical Bulletin 129	Determines the burning behavior of mattress used in public occupancies	In order to pass, the following criteria may not be exceeded: 1. Weight loss due to combustion of 3lbs. Or greater: 10 minutes 2. Maximum rate of heat release of 100 kw 3. Total heat release of 25 MJ or greater: 10 minutes	Our product was well below the allowed thresholds in all categories
California Technical Bulletin 121	Measures the ability of a mattress to resist the forced ignition that may occur in high risk facilities such as prisons, jails, and health care facilities	In order to pass, the following criteria may not be exceeded: 1. 10% weight loss in the first 10 minutes 2. Temperature above 500 DEG F at any time during the test 3. Carbon monoxide concentration of 1,000 ppm at any point in the test room at any time during the test	With its natural tendency to retreat from an open flame heat source, densified batting passed within the test criteria
California Technical Bulletin 117 Section C	Determines the resistance of resilient man made fiber filling materials to flame spread when ignited	A burner flame is applied near the lower edge for five seconds. The time for the flame to proceed 5" is measured	Did not ignite (DNI) because of the unique ability of densified batting to shrink, retreat from a flame source
California Technical Bulletin 117 Section D Part 1	Determines the resistance of resilient filling materials to smoldering combustion from a cigarette	The maximum char length of any specimen is not to exceed 2" in any direction from a cigarette	Our product passed with a char length of only 0.3 inches
Federal Aviation Administration 25.853b	Determines the resistance of resilient materials to flame propagation and the ability to char rather than ignite when exposed to an open flame source	In order to pass, the following criteria may not be exceeded: 1. Flame time after removal of flame 15 sec. 2. Char length 8" 3. Flame time of drippings 5 sec.	Our product had no flame time at all and char length was less than 4"
ASTME-162 Radiant Panel	Measures flame spread based on: 1. How rapidly the material burns 2. The amount of heat given off by the burning material	Class Flame Spread 1 or A 0—25 2 or B 26—75 3 or C 76—200	Our product passed the test with a flame spread index of less than 2
ASTME-662 Smoke Density (one inch sample)	Measures the amount of smoke given off by the burning material	Flaming/ Non Flaming Mode Ds at 90 sec.— 100 Maximum Ds at 4 min.—200 Maximum Dm—300 Maximum	Our product was well below the allowed thresholds in all categories

<p>JAILS CORRECTIONAL PRODUCTS A Division of FABCOR, Inc. 350 South Ohio Street, P.O. Box 58 Minster, Ohio 45865 www.fabcor.com</p>	<p>Equipment Assembly EA-04.01 Revision C ©2003 Fabcor, Inc.</p>
--	--

Phone: (419) 628- 4428
 Fax: (419) 628- 2899
 E-mail: jails@fabcor.com

Bunk Accessories- Pillow

BUNK AC-

JCP Models Description

J-1-8651 20" x 26" ACA Blue & White Stripe
Pillow

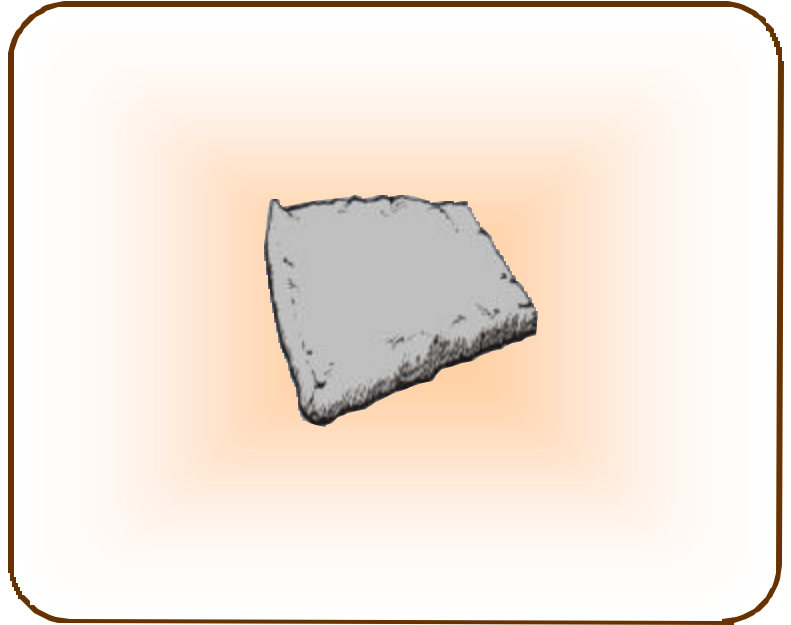
J-1-8652 20" x 26" Cotton Fiberglass Cover Pillow

J-1-8653 20" x 26" Micro Guard Pillow

J-1-8654 20" x 26" Poly Core Vinyl Cover Pillow

J-1-8655 20" x 26" Cotton Core Microvent Vinyl
Cover Pillow

J-1-8656 20" x 26" Poly Core Microvent Vinyl
Cover Pillow



JCP Specifications:

ACA Blue and White Stripe Pillow (J-1-8651)

Flame resistant cover is 100% cotton twill fabric, in blue and white stripes. Flame resistant core is 20 oz. Polyester fiberfill. Laundering is not recommended.

Cotton/ Fiberglass Cover Pillow (J-1-8652)

Open flame barrier, fabric cover is 60% cotton and 40% fiberglass (core spun yarns) with stain release finish. Flame resistant core is 20 oz. Polyester fiber. To clean, wipe with a damp cloth. If this does not remove the dirt, use a mild detergent. Do not machine wash. Cover contains fiberglass and is not intended for machine washings. Do not use strong alkalis, acids organic solvents or other flammable liquids. These may damage the fire retardance and physical strength of the fabric.

Micro Guard Pillow (J-1-8653)

Flame resistant cover is a white nylon waterproof fabric, treated with Bio Pruf, to kill bacteria and keep it from spreading or growing back. Flame resistant core is an antimicrobial 20 oz. Polyester fiberfill. Stain resistant cover needs no laundering, wipes clean with soap and water or properly diluted disinfectants.

Poly Core Vinyl Cover Pillow (J-1-8654)

Flame resistant core is 100% polyester fiber. Flame resistant cover is heavy duty vinyl laminate. Two layers of vinyl bonded to a tough synthetic scrim. Wipe clean with soap and water or properly diluted disinfectants, do not launder.

Cotton Core Microvent Vinyl Cover Pillow (J-1-8655)

Flame resistant core is high grade cotton batting with a minimum of 10% boric acid added. Flame resistant cover is Microvent Soft, a multi layer vinyl nylon laminate that breaths for added comfort. Wipe clean with soap and water or properly diluted disinfectants, do not launder.

Poly Core Microvent Vinyl Cover Pillow (J-1-8656)

Flame resistant core is 100% polyester fiber. Flame resistant cover is Microvent Soft, a multi layer vinyl nylon laminate that breaths for added comfort. Wipe clean with soap and water or properly diluted disinfectants, do not launder.

JAILS CORRECTIONAL PRODUCTS A Division of **FABCOR, Inc.**

350 South Ohio Street, P.O. Box 58
4428
Minster, Ohio 45865

Phone: (419) 628-

Fax:

Equipment Assembly

EA-04.02

Revision C

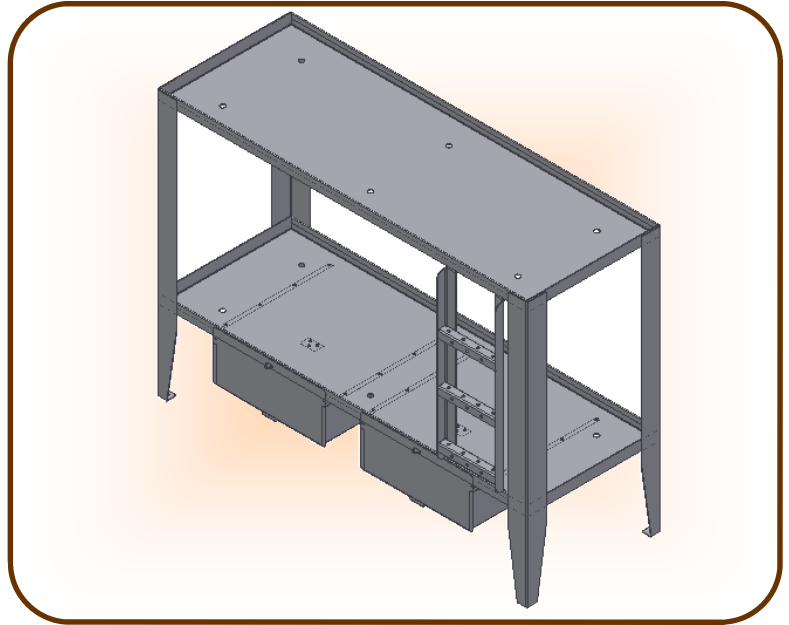
©2003 Fabcor, Inc.

Bunk Accessories– Ladder, Shelf, Drawer, Rail

BUNK ACCESSORIES

JCP Models Description

J-1-8661	Double Bunk Ladder
J-1-8671	Bunk Shelf
J-1-8681	Bunk Drawer w/ Hasp
J-1-8682	Bunk Drawer w/ Lock
J-1-8691	Bunk Safety Rail



JCP Specifications:

Double Bunk Ladder (J-1-8661)

Double bunk ladder rails are fabricated from 7 gauge HRPO steel and are bolted to the upper and lower bunk with (8) 1/4-20 button head Torx® screws. Ladder treads are fabricated from 10 gauge HRPO steel and welded to the ladder rails to form one ladder unit. The ladder unit will be prime or finished painted according with the paint requirements of the bunk.

Bunk Shelf (J-1-8671) (not shown)

Bunk shelf is fabricated from 10 gauge HRPO steel and is bolted under the bunk pan with (8) 1/4-20 button head Torx® screws. The size of the shelf is 24" wide x 24" long x 8" high and will be prime or finished painted according with the paint requirements of the bunk. Note: JCP Model J-8671 denotes a quantity of (1) one shelf independent of the number of bunk pans.

Bunk Drawer w/ Hasp (J-1-8681)

Bunk drawer is fabricated from 14 gauge HRPO steel and is 21-1/2" wide x 24-1/2" long x 8" high. The 11 gauge HRPO steel drawer guides are bolted under the bunk pan with (8) 1/4-20 button head Torx® screws. The 7 gauge HRPO steel stop is bolted under the bunk pan with (3) 1/4-20 button head Torx® screws. The 1/4" HRPO steel hasp is welded under the bunk pan and protrudes through a slot in the drawer for locking with a pad or combination lock provided by others. The entire drawer assembly will be prime or finished painted according with the paint requirements of the bunk. Note: JCP Model J-8681 denotes a quantity of (1) one drawer assembly independent of the number of bunk pans.

Bunk Drawer w/ Lock (J-1-8682) (not shown)

Bunk drawer is fabricated from 14 gauge HRPO steel and is 21-1/2" wide x 24-1/2" long x 8" high. The 11 gauge HRPO steel drawer guides are bolted under the bunk pan with (8) 1/4-20 button head Torx® screws. The 7 gauge HRPO steel stop is bolted under the bunk pan with (3) 1/4-20 button head Torx® screws. A combination lock is built into the front of the drawer. The entire drawer assembly will be prime or finished painted according with the paint requirements of the bunk. Note: JCP Model J-8682 denotes a quantity of (1) one drawer assembly independent of the number of bunk pans.

Bunk Safety Rail (J-1-8691) (not shown)

Bunk Safety rail is fabricated from 5/8" diameter bar and is welded to 7 gauge HRPO steel mounting plates. The 60" long x 8" high assembly is mounted to either side of the bunk pan with (3) 3/8-16 button head Torx® screws. The entire rail assembly will be prime or finished painted according with the paint requirements of the bunk. Note: JCP Model J-8691 denotes a quantity of (1) one rail assembly independent of the number of bunk pans or open sides of the bunk.

JAILS CORRECTIONAL PRODUCTS A Division of **FABCOR, Inc.**

350 South Ohio Street, P.O. Box 58
Minster, Ohio 45865
www.fabcor.com

Phone: (419) 628- 4428
Fax: (419) 628- 2899
E-mail: jails@fabcor.com

Equipment Assembly

EA-04.03

Revision C

©2003 Fabcor, Inc.

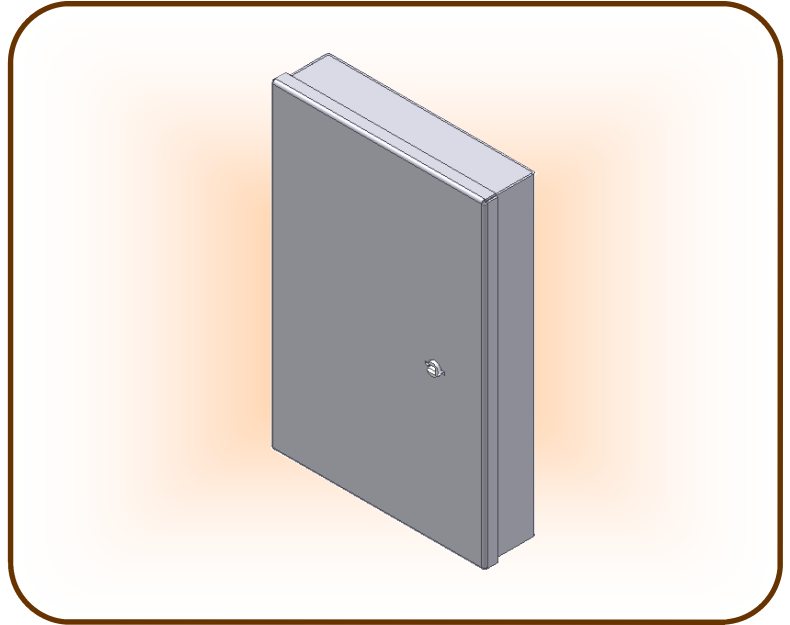
Key Cabinet– Surface Mount

KEY CABINET

JCP Models

Description

J-1-4001	Key Cabinet (shown)
J-1-4002	Key Cabinet w/ BHK Panel
J-1-4003	Key Cabinet w/ Expansion Panel
J-1-4004	Key Cabinet w/ BHK & Expansion Panel
J-1-4005	Key Cabinet w/ Finish Paint
J-1-4006	Key Cabinet w/ BHK Panel & Finish Paint
J-1-4007	Key Cabinet w/ Expansion Panel & Finish Paint
J-1-4008	Key Cabinet w/ BHK, Expansion Panel & Finish Paint



JCP Specifications: Key cabinets are fabricated from 10 gauge HRPO steel and are 16” wide x 24” high x 4-1/8” deep. Six 1/2” diameter holes are provided in the back of the cabinet for the installer to provide and install 3/8” diameter expansion anchors to surface mount the key cabinet to the wall. Three 10 gauge HRPO steel key hangers are welded to the back of the cabinet to provide space to secure approximately 144 mogul or paracentric keys. The door is welded to the cabinet with two 3” x 3” extra heavy duty blank steel hinges. Key cabinets are shipped fully welded and assembled with one shop coat of our standard primer.

Security locks are not provided with the key cabinet and must be purchased separately. JCP will provide a lock mounting preparation if furnished with the template for the lock.

Key cabinets specified to receive finish paint will receive one shop coat of our standard primer and one shop coat of our standard finish paint with a textured finish. Finish paint color will be from our standard finish paint color palette.

The builders hardware key (BHK) panel is fabricated from 14 gauge stainless steel and contains 53 hooks to secure approximately 477 builders hardware keys. The BHK panel is welded to the inside of the door. The stainless steel panel has a random orbital finish.

The expansion panel is fabricated from 10 gauge HRPO steel and has three key hangers welded to the back side of the panel only. The expansion panel is welded to the inside of the cabinet with two 3” x 3” extra heavy duty blank steel hinges to allow access to the keys in the back of the cabinet and provides space to secure approximately 144 mogul or paracentric keys. The expansion panel requires the depth of the key cabinet to be increased to 8” and receives the same primer or finish paint as the key cabinet.

Note: The wall must be flat and true within 1/16” +/- for the proper installation of the key cabinet. Special key cabinet sizes, gauges, or construction may be available on a per project basis for additional cost, please contact a JCP estimator for pricing and availability.

JAILS CORRECTIONAL PRODUCTS A Division of **FABCOR, Inc.**

350 South Ohio Street, P.O. Box 58
Minster, Ohio 45865
www.fabcor.com

Phone: (419) 628- 4428
Fax: (419) 628- 2899
E-mail: jails@fabcor.com

Equipment Assembly

EA-05.01

Revision C

©2003 Fabcor, Inc.

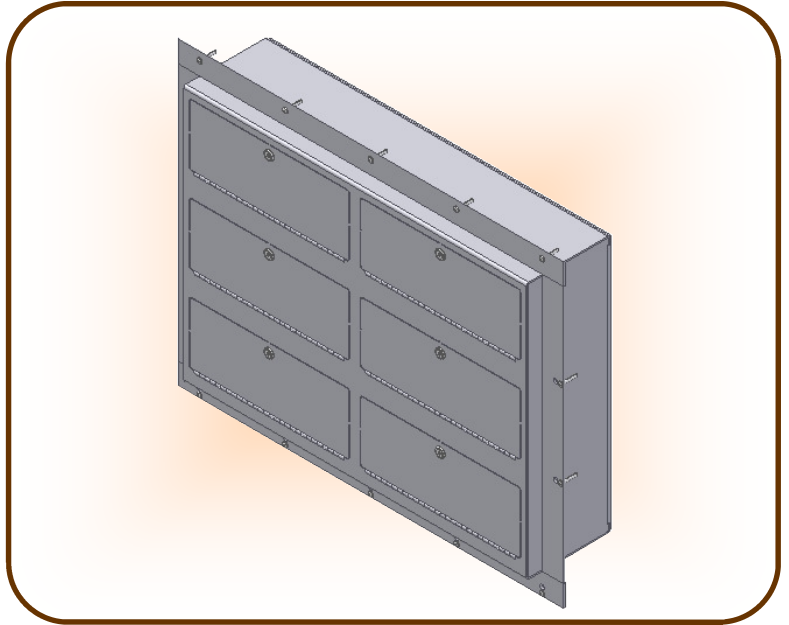
Pistol Locker– Compartment- Recessed Mount

PISTOL LOCKER

JCP Models

Description

J-1-4101	Three Compartment Pistol Locker
J-1-4102	Six Compartment Pistol Locker (shown)
J-1-4103	Nine Compartment Pistol Locker
J-1-4104	Twelve Compartment Pistol Locker
J-1-4105	Three Compartment Pistol Locker w/ Finish Paint
J-1-4106	Six Compartment Pistol Locker w/ Finish Paint
J-1-4107	Nine Compartment Pistol Locker w/ Finish Paint
J-1-4108	Twelve Compartment Pistol Locker w/ Finish Paint



JCP Specifications: Pistol Lockers are fabricated from 10 gauge HRPO steel shell and doors. A 3/16" x 2" x 2" mild steel angle surrounds the unit with 1/2" diameter holes at 8" c/c for the installer to provide and install 3/8" diameter expansion anchors to mount the locker to the wall. A continuous hinge and cam lock is provided at each door and each compartment is carpeted on the bottom and sides. Two keys per lock and two master keys for the entire unit are furnished. Pistol lockers are shipped fully welded and assembled with one shop coat of our standard primer.

Pistol lockers specified to receive finish paint will receive one shop coat of our standard primer and one shop coat of our standard finish paint with a textured finish. Finish paint color will be from our standard finish paint color palette.

Note: The wall must be flat and true within 1/16" +/- for the proper installation of the pistol locker. Special pistol locker sizes, gauges, or construction may be available on a per project basis for additional cost, please contact a JCP estimator for pricing and availability.

Pistol locker sizes (excluding mounting angle):

Three compartment:	16" wide x 24" high x 8" deep
Six compartment:	32" wide x 24" high x 8" deep
Nine compartment:	48" wide x 24" high x 8" deep
Twelve compartment:	64" wide x 24" high x 8" deep

JAILS CORRECTIONAL PRODUCTS A Division of **FABCOR, Inc.**

350 South Ohio Street, P.O. Box 58
Minster, Ohio 45865
www.fabcor.com

Phone: (419) 628- 4428
Fax: (419) 628- 2899
E-mail: jails@fabcor.com

Equipment Assembly

EA-06.01

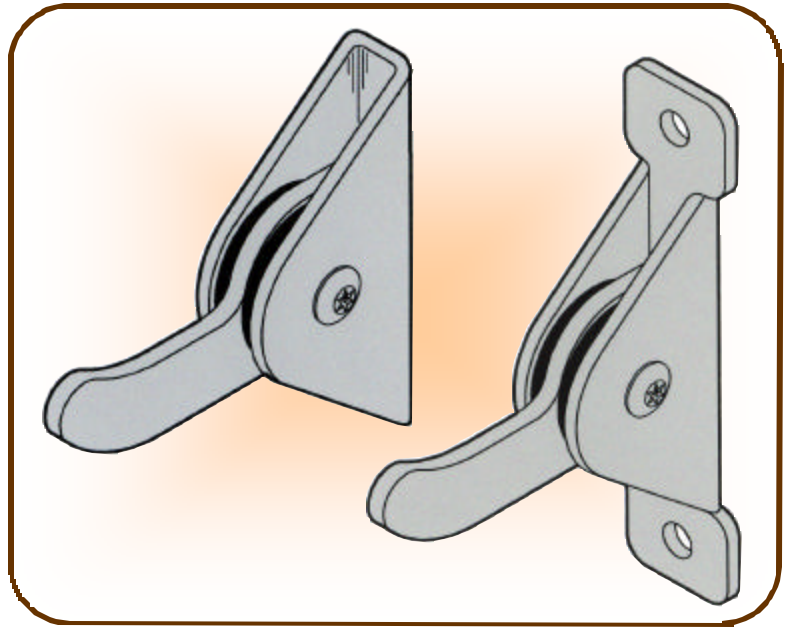
Revision C

©2003 Fabcor, Inc.

Safety Hook– Single Friction Type

SAFETY HOOK

<u>JCP Models</u>	<u>Description</u>
J-1-5001	Weld Mount Safety Hook (shown)
J-1-5002	Bolt Mount Safety Hook (shown)
J-1-5003	Weld Mount Safety Hook w/ Embed
J-1-5004	Weld Mount Safety Hook w/ Stainless Steel Embed



JCP Specifications: Weld mount friction type safety hook body is fabricated from 11 gauge stainless steel and is 3-1/8" high x 1-3/8" long x 5/8" wide. The 3" long hook is fabricated from 8 gauge stainless steel and the assembly with two 1/8" thick rubber washers is secured with a 1/4-20 x 1/2" button head Torx® w/ pin screw. The friction type safety hook is designed to collapse at approximately 40 pounds of pressure and can be adjusted. The weld mount safety hook is designed to be welded to other products such as a shelf, or can be welded directly to a plate wall.

The bolt mount safety hook is similar to the weld mount other than it has a mounting tap on the top and bottom with a 1/4" diameter hole for installation to a wall with security anchors provided by the installer.

The back plate of the embed for the weld mount safety hook is fabricated from 7 gauge HRPO steel and is 3" x 5". The anchor strap is fabricated from 12 gauge HRPO steel and is 2" wide and 4" long. The embed assembly will receive one shop coat of our standard primer.

The back plate of the stainless steel embed for the weld mount safety hook is fabricated from 7 gauge stainless steel and is 3" x 5". The anchor strap is fabricated from 12 gauge stainless steel and is 2" wide and 4" long. All stainless steel will have a random orbital finish.

The installer of the embeds will place the embed on the appropriate block course and lay the block in and around the embed straps. The installer will insert a #4 rebar (provided by installer) through each anchor strap and verify that the embed is flat and true. The block wall must be grouted solid for proper anchorage.

JAILS CORRECTIONAL PRODUCTS A Division of **FABCOR, Inc.**

350 South Ohio Street, P.O. Box 58
Minster, Ohio 45865
www.fabcor.com

Phone: (419) 628- 4428
Fax: (419) 628- 2899
E-mail: jails@fabcor.com

Equipment Assembly

EA-09.01

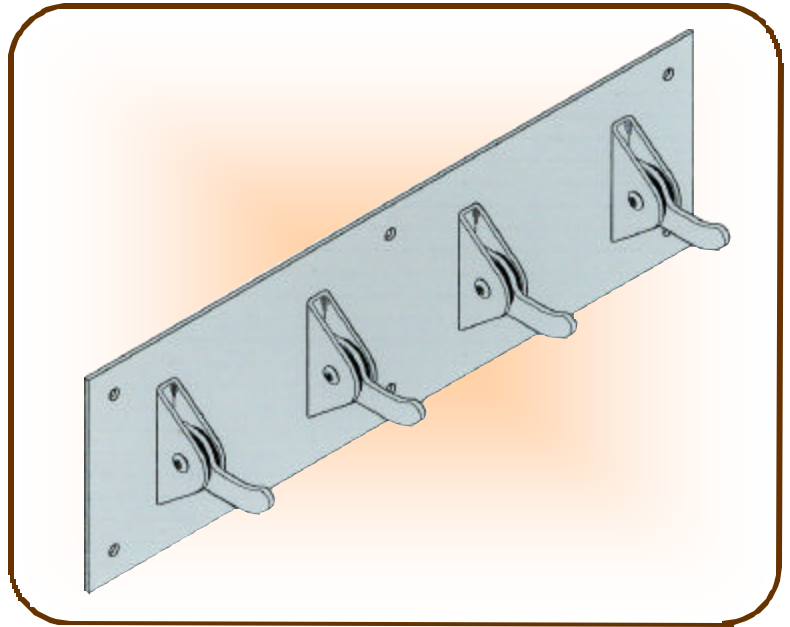
Revision C

©2003 Fabcor, Inc.

Safety Hook– Multiple Friction Type

SAFETY HOOK

<u>JCP Models</u>	<u>Description</u>
J-1-5011	Weld Mount (2) Safety Hook w/ Back Plate
J-1-5012	Bolt Mount (2) Safety Hook w/ Embed
J-1-5013	Weld Mount (2) Safety Hook w/ Stainless Steel Back Plate
J-1-5014	Bolt Mount (2) Safety Hook w/ Stainless Steel Embed
J-1-5015	Weld Mount (4) Safety Hook w/ Back Plate (shown)
J-1-5016	Bolt Mount (4) Safety Hook w/ Embed
J-1-5017	Weld Mount (4) Safety Hook w/ Stainless Steel Back Plate
J-1-5018	Bolt Mount (4) Safety Hook w/ Stainless Steel Embed



JCP Specifications: Weld mount friction type safety hook body is fabricated from 11 gauge stainless steel and is 3-1/8" high x 1-3/8" long x 5/8" wide. The 3" long hook is fabricated from 8 gauge stainless steel and the assembly with two 1/8" thick rubber washers is secured with a 1/4-20 x 1/2" button head Torx® w/ pin screw. The friction type safety hook is designed to collapse at approximately 40 pounds of pressure and can be adjusted.

The back plate for the weld mount (2) safety hook is fabricated from 7 gauge HRPO steel and is 5" x 9" and will have four 1/2" diameter holes for installation to the wall with security anchors provided by the installer. The back plate assembly will receive one shop coat of our standard primer.

The back plate of the embed for the weld mount (2) safety hook is fabricated from 7 gauge HRPO steel and is 5" x 9". The anchor straps are fabricated from 12 gauge HRPO steel and is 2" wide and 4" long. The embed assembly will receive one shop coat of our standard primer.

The stainless steel back plate for the weld mount (2) safety hook is fabricated from 7 gauge stainless steel and is 5" x 9" and will have four 1/2" diameter holes for installation to the wall with security anchors provided by the installer. All stainless steel will have a random orbital finish.

The stainless steel back plate of the embed for the weld mount (2) safety hook is fabricated from 7 gauge stainless steel and is 5" x 9". The anchor straps are fabricated from 12 gauge stainless steel and is 2" wide and 4" long. All stainless steel will have a random orbital finish.

The weld mount (4) safety hooks are similar to the above specifications other than they will have 5" x 18" back plates to accommodate the four safety hooks.

The installer of the embeds will place the embed on the appropriate block course and lay the block in and around the embed straps. The installer will insert a #4 rebar (provided by installer) through each anchor strap and verify that the embed is flat and true. The block wall must be grouted solid for proper anchorage.

JAILS CORRECTIONAL PRODUCTS A Division of **FABCOR, Inc.**

350 South Ohio Street, P.O. Box 58
Minster, Ohio 45865
www.fabcor.com

Phone: (419) 628- 4428
Fax: (419) 628- 2899
E-mail: jails@fabcor.com

Equipment Assembly

EA-09.02

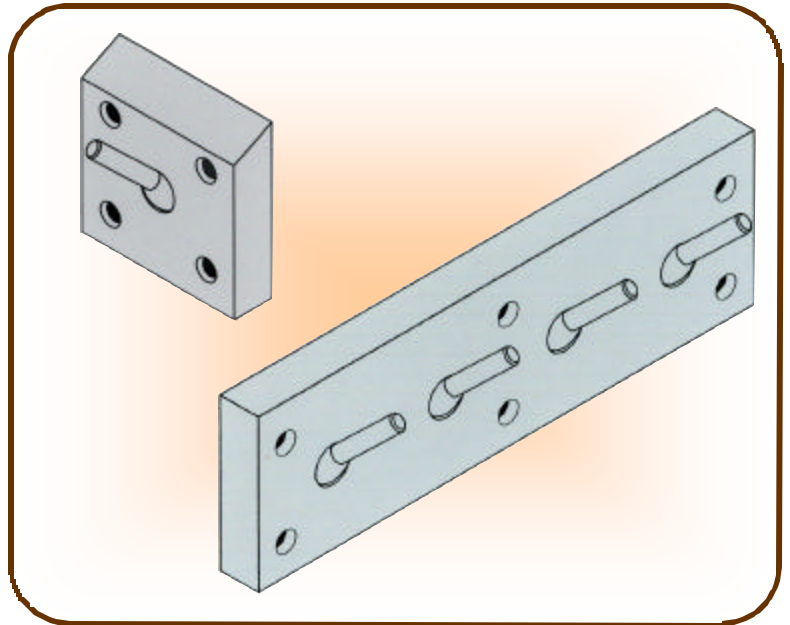
Revision C

©2003 Fabcor, Inc.

Safety Hook– Ball Joint Type

SAFETY HOOK

<u>JCP Models</u>	<u>Description</u>
J-1-5101	Ball Joint Safety Hook (shown)
J-1-5102	Ball Joint Safety Hook w/ Embed
J-1-5103	Ball Joint Safety Hook w/ Stainless Steel Embed
J-1-5104	Ball Joint (2) Safety Hook w/ Back Plate
J-1-5105	Ball Joint (2) Safety Hook w/ Embed
J-1-5106	Ball Joint (2) Safety Hook w/ Stainless Steel Back Plate
J-1-5107	Ball Joint (2) Safety Hook w/ Stainless Steel Embed
J-1-5108	Ball Joint (4) Safety Hook w/ Back Plate
J-1-5109	Ball Joint (4) Safety Hook w/ Embed
J-1-5110	Ball Joint (4) Safety Hook w/ Stainless Steel Back Plate (shown)
J-1-5111	Ball Joint (4) Safety Hook w/ Stainless Steel Embed



JCP Specifications: Ball joint type safety hook body is fabricated from 14 gauge stainless steel and is 4” wide x 4” long x 1” deep. The 3/8” diameter x 1-1/4” long stainless steel hook is connected to a ball joint that moves in a nylon insert. The ball joint type safety hook is designed to collapse at approximately 40 pounds or less of pressure and can not adjusted. The ball joint type safety hook is designed to be mounted to other products such as a shelf with the provided (4) 1/4-20 flat head Torx® w/ pin screws.

The back plate of the embed for the ball joint safety hook is fabricated from 7 gauge HRPO steel and is 5” x 5”. The anchor strap is fabricated from 12 gauge HRPO steel and is 2” wide and 4” long. The embed assembly will receive one shop coat of our standard primer.

The back plate of the stainless steel embed for the ball joint safety hook is fabricated from 7 gauge stainless steel and is 5” x 5”. The anchor strap is fabricated from 12 gauge stainless steel and is 2” wide and 4” long. All stainless steel will have a random orbital finish.

The back plate for the ball joint (2) safety hook is fabricated from 7 gauge HRPO steel and is 5” x 10” and will have four 1/2” diameter holes for the installation to the wall with security anchors provided by the installer. The embed assembly will receive one shop coat of our standard primer.

The stainless steel back plate for the ball joint (2) safety hook is fabricated from 7 gauge stainless steel and is 5” x 10” and will have four 1/2” diameter holes for the installation to the wall with security anchors provided by the installer. All stainless steel will have a random orbital finish.

The ball joint type (2) safety hooks with back plate or embed are similar to the above specification other than they will have 5” x 10” plates to accommodate the two safety hooks

The ball joint type (4) safety hooks with back plate or embed are similar to the above specification other than they will have 5” x 20” plates to accommodate the four safety hooks

The installer of the embeds will place the embed on the appropriate block course and lay the block in and around the embed straps. The installer will insert a #4 rebar (provided by installer) through each anchor strap and verify that the embed is flat and true. The block wall must be grouted solid for proper anchorage.

JAILS CORRECTIONAL PRODUCTS A Division of **FABCOR, Inc.**

350 South Ohio Street, P.O. Box 58
Minster, Ohio 45865
www.fabcor.com

Phone: (419) 628- 4428
Fax: (419) 628- 2899
E-mail: jails@fabcor.com

Equipment Assembly

EA-09.03

Revision C

©2003 Fabcor, Inc.

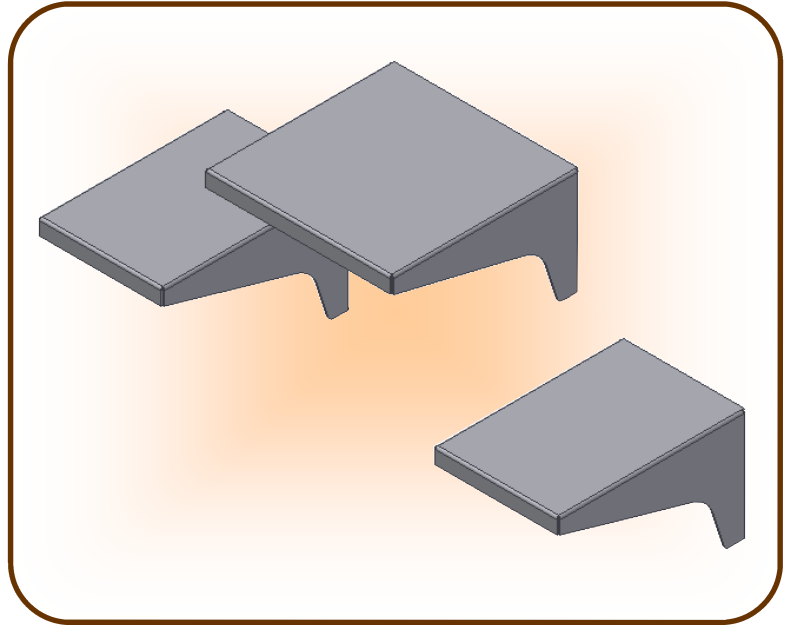
Table and Seat- Wall Mount

TABLE

JCP Models

Description

J-1-3501	Table
J-1-3502	Table w/ Embed
J-1-3503	Table w/ Stainless Steel
J-1-3504	Table w/ Stainless Steel, Embed
J-1-3505	Table w/ Finish Paint
J-1-3506	Table w/ Finish Paint, Embed
J-1-3531	Table w/ (1) Seat
J-1-3532	Table w/ (1) Seat, Embed
J-1-3533	Table w/ (1) Seat, Stainless Steel
J-1-3534	Table w/ (1) Seat, Stain. Steel, Embed
J-1-3535	Table w/ (1) Seat, Finish Paint
J-1-3536	Table w/ (1) Seat, Finish Paint, Embed
J-1-3561	Table w/ (2) Seat (shown)
J-1-3562	Table w/ (2) Seat, Embed
J-1-3563	Table w/ (2) Seat, Stainless Steel
J-1-3564	Table w/ (2) Seat, Stain. Steel, Embed
J-1-3565	Table w/ (2) Seat, Finish Paint
J-1-3566	Table w/ (2) Seat, Finish Paint, Embed



JCP Specifications: Tables are fabricated from one piece of 10 gauge HRPO steel that is fully welded and have a 18" x 18" top. Each support leg is 10-1/2" long and has two 1/2" diameter holes for installation to a wall with security anchors provided by the installer. The table will receive one shop coat of our standard primer. Tables are to be set at 30" above the finished floor.

Each Seat is fabricated from one piece of 10 gauge HRPO steel that is fully welded and have a 12" wide x 18" long top. Each support leg is 10-1/2" long and has two 1/2" diameter holes for installation to a wall with security anchors provided by the installer. The seat will receive one shop coat of our standard primer. Seats are to be set at 18" above the finished floor and 4" from the table.

Where embed is specified, integral anchor straps of the same material as the table or seat that are 4" long welded to the unit. The table or seat unit is embedded in the wall by the installer as one unit. The installer of the embeds will place the embed on the appropriate block course and lay the block in and around the embed straps. The installer will insert a #4 rebar (provided by installer) through each anchor strap and verify that the embed is flat and true. The block wall must be grouted solid for proper anchorage.

Where stainless steel is specified for either a table or seat, the unit will be fabricated from the same gauge stainless steel with the same dimensions. All stainless steel will have a random orbital finish.

Where finish paint is specified for either a table or a seat, the unit will receive one shop coat of our standard primer and one shop coat of our standard finish paint with a textured finish. Finish paint color will be from our standard finish paint color palette.

Walls must be flat and true within 1/16" +/- for the proper installation and use of the table or seat. Special table or seat sizes or configurations may be available on a per project basis for additional cost. Please contact a JCP estimator for pricing and availability.

JAILS CORRECTIONAL PRODUCTS A Division of **FABCOR, Inc.**

350 South Ohio Street, P.O. Box 58
Minster, Ohio 45865
www.fabcor.com

Phone: (419) 628- 4428
Fax: (419) 628- 2899
E-mail: jails@fabcor.com

Equipment Assembly

EA-11.01

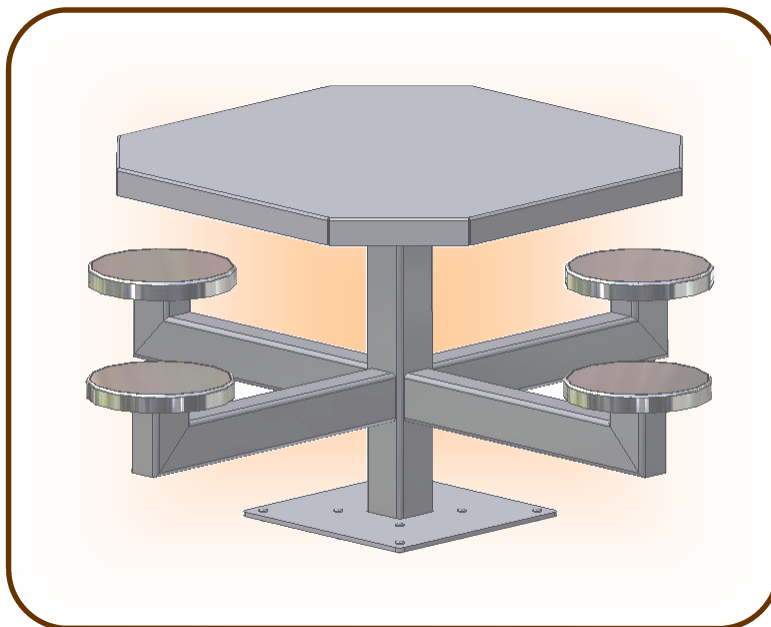
Revision C

©2003 Fabcor, Inc.

Pedestal Table- Floor Mount

TABLE

<u>JCP Models</u>	<u>Description</u>
J-1-3601	Two Seat Pedestal Table
J-1-3602	Four Seat Pedestal Table (shown)
J-1-3603	Six Seat Pedestal Table
J-1-3604	Eight Seat Pedestal Table
J-1-3621	Two Seat Pedestal Table w/ Finish Paint
J-1-3622	Four Seat Pedestal Table w/ Finish Paint
J-1-3623	Six Seat Pedestal Table w/ Finish Paint
J-1-3624	Eight Seat Pedestal Table w/ Finish Paint



JCP Specifications: Pedestal table tops are 40" x 40" and are fabricated from 10 gauge HRPO, which is reinforced with a 10 gauge HRPO steel plate. Additional top reinforcement is provided by four 10 gauge HRPO steel channels from the pedestal to the edge of the table top. The single pedestal is fabricated from a 7 gauge x 4" x 4" tube steel and is welded to the top reinforcement and the 3/8" x 18" x 18" Base Plate, which has eight 1/2" holes for securing the pedestal table to the floor. The seat support is fabricated from 7 gauge x 3" x 4" tube steel and the distance from edge of the seat top to edge of the opposite seat top is 66". The 12" diameter seat top is fabricated from 14 gauge stainless steel and has a 7 gauge HRPO reinforcement plate. The table is shipped as one unit and receives one shop coat of our standard primer, excluding the stainless steel seat tops.

The two seat pedestal table will have a single pedestal and two seats opposite of each other.

The four seat pedestal table will have a single pedestal and four seats as shown.

The six seat pedestal table will have two pedestals and three seats per pedestal.

The eight seat pedestal table will have two pedestals with three seats per pedestal, and one pedestal with two seats opposite of each other.

Pedestal tables specified to receive finish paint will receive one shop coat of our standard primer and one shop coat of standard finish paint with a textured finish. Finish paint color will be from our standard finish paint color palette.

Note: Floors must be flat and true within 1/16" +/- for the proper installation of the pedestal table. Installer to furnish and install the eight mushroom head spikes to secure the pedestal table to the floor. Special pedestal table sizes, gauges, or construction may be available on a per project basis for additional cost, please contact a JCP estimator for pricing and availability.

JAILS CORRECTIONAL PRODUCTS A Division of **FABCOR, Inc.**

350 South Ohio Street, P.O. Box 58
Minster, Ohio 45865
www.fabcor.com

Phone: (419) 628- 4428
Fax: (419) 628- 2899
E-mail: jails@fabcor.com

Equipment Assembly

EA-11.02

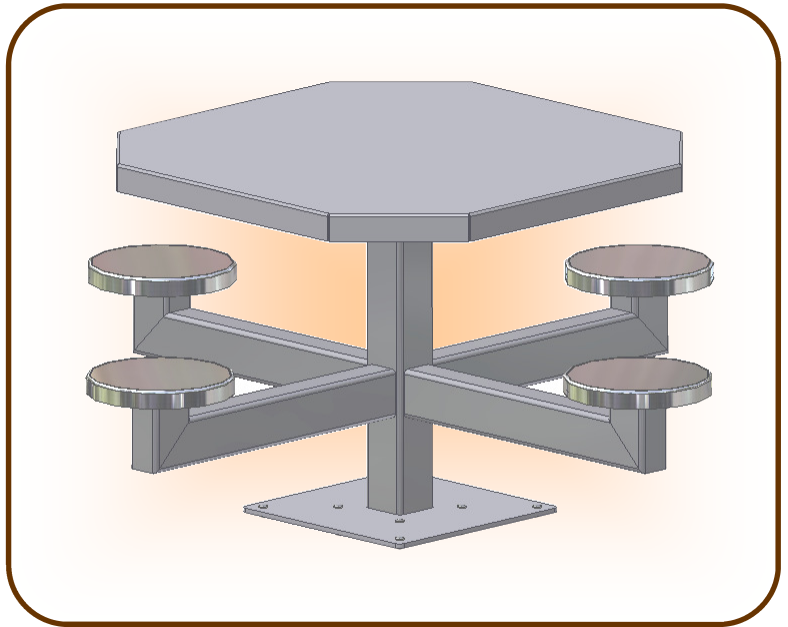
Revision C

©2003 Fabcor, Inc.

Pedestal Table- Floor Mount– Stainless Steel Top

TABLE

<u>JCP Models</u>	<u>Description</u>
J-1-3641	Two Seat Pedestal Table w/ Stainless Steel Top
J-1-3642	Four Seat Pedestal Table w/ Stainless Steel Top (shown)
J-1-3643	Six Seat Pedestal Table w/ Stainless Steel Top
J-1-3644	Eight Seat Pedestal Table w/ Stainless Steel Top
J-1-3661	Two Seat Pedestal Table w/ Stainless Steel Top, Finish Paint
J-1-3662	Four Seat Pedestal Table w/ Stainless Steel Top, Finish Paint
J-1-3663	Six Seat Pedestal Table w/ Stainless Steel Top, Finish Paint
J-1-3664	Eight Seat Pedestal Table w/ Stainless Steel Top, Finish Paint



JCP Specifications: Pedestal table tops are 40" x 40" and are fabricated from 10 gauge stainless steel, which is reinforced with a 10 gauge HRPO steel plate. Additional top reinforcement is provided by four 10 gauge HRPO steel channels from the pedestal to the edge of the table top. The single pedestal is fabricated from a 7 gauge x 4" x 4" tube steel and is welded to the top reinforcement and the 3/8" x 18" x 18" Base Plate, which has eight 1/2" holes for securing the pedestal table to the floor. The seat support is fabricated from 7 gauge x 3" x 4" tube steel and the distance from edge of the seat top to edge of the opposite seat top is 66". The 12" diameter seat top is fabricated from 14 gauge stainless steel and has a 7 gauge HRPO reinforcement plate. The table is shipped as one unit and receives one shop coat of our standard primer, excluding the stainless steel top and seat tops which have a random orbital finish.

The two seat pedestal table will have a single pedestal and two seats opposite of each other.

The four seat pedestal table will have a single pedestal and four seats as shown.

The six seat pedestal table will have two pedestals and three seats per pedestal.

The eight seat pedestal table will have two pedestals with three seats per pedestal, and one pedestal with two seats opposite of each other.

Pedestal tables specified to receive finish paint will receive one shop coat of our standard primer and one shop coat of standard finish paint with a textured finish. Finish paint color will be from our standard finish paint color palette.

Note: Floors must be flat and true within 1/16" +/- for the proper installation of the pedestal table. Installer to furnish and install the eight mushroom head spikes to secure the pedestal table to the floor. Special pedestal table sizes, gauges, or construction may be available on a per project basis for additional cost, please contact a JCP estimator for pricing and availability.

JAILS CORRECTIONAL PRODUCTS A Division of **FABCOR, Inc.**

350 South Ohio Street, P.O. Box 58
Minster, Ohio 45865
www.fabcor.com

Phone: (419) 628- 4428
Fax: (419) 628- 2899
E-mail: jails@fabcor.com

Equipment Assembly

EA-11.03

Revision C

©2003 Fabcor, Inc.

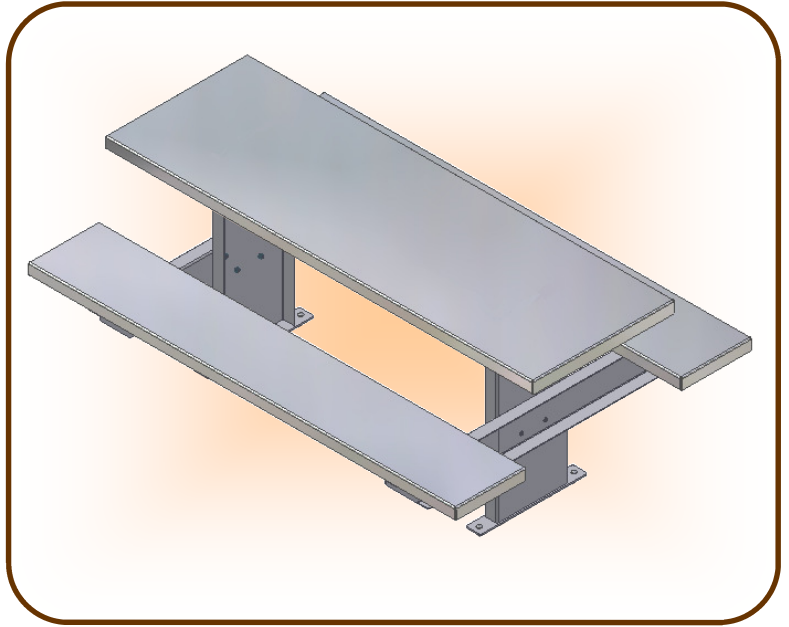
Picnic Table- Floor Mount

TABLE

JCP Models

Description

J-1-3701	Two Seat Picnic Table
J-1-3702	Four Seat Picnic Table
J-1-3703	Six Seat Picnic Table (shown)
J-1-3704	Eight Seat Picnic Table
J-1-3711	Two Seat Picnic Table w/ Finish Paint
J-1-3712	Four Seat Picnic Table w/ Finish Paint
J-1-3713	Six Seat Picnic Table w/ Finish Paint
J-1-3714	Eight Seat Picnic Table w/Finish Paint
J-1-3721	Two Seat Picnic Table (full weld)
J-1-3722	Four Seat Picnic Table (full weld)
J-1-3723	Six Seat Picnic Table (full weld)
J-1-3724	Eight Seat Picnic Table (full weld)
J-1-3731	Two Seat Picnic Table (full weld) w/ Finish Paint
J-1-3732	Four Seat Picnic Table (full weld) w/ Finish Paint
J-1-3733	Six Seat Picnic Table (full weld) w/ Finish Paint
J-1-3734	Eight Seat Picnic Table (full weld) w/ Finish Paint



JCP Specifications: Picnic table top and seat tops are fabricated from 10 gauge HRPO steel, and are 24” wide for the top and are 12” wide for the seats. The top is reinforced with a 11 gauge HRPO steel stabilizing channel down the middle of the top and an additional reinforcing channel where each leg connects to the top. The legs channels are fabricated from 10 gauge HRPO steel and are welded to base plates fabricated from 1/4” HRPO steel. The seat support channels are fabricated from 10 gauge HRPO steel. The table top height is 30” from the finished floor and the seats are 18” from the finished floor. All components receive one shop coat of our standard primer.

Picnic tables are shipped as separate components consisting of the top, (2) seats, (2) leg assemblies and (2) seat supports. The (20) 3/8-16 button head Torx® w/ pin security screws are also shipped separate for assembly by the installer.

Picnic tables specified as (full weld) will be completely welded together prior to shipping and shipped as one unit. All assembly screws are deleted to allow full welding of all components. Note that shipping fully welded picnic table will increase the shipping costs to the jobsite and may be difficult to move through the facility.

The two seat picnic table is 24” long.

The four seat picnic table is 48” long.

The six seat picnic table is 72” long.

The eight seat picnic table is 96” long.

Picnic tables specified to receive finish paint will receive one shop coat of our standard primer and one shop coat of standard finish paint with a textured finish. Finish paint color will be from our standard finish paint color palette.

Note: Floors must be flat and true within 1/16” +/- for the proper installation of the picnic table. Installer to furnish and install the eight mushroom head spikes to secure the picnic table to the floor. Special picnic table sizes, gauges, or construction may be available on a per project basis for additional cost, please contact a JCP estimator for pricing and availability.

JAILS CORRECTIONAL PRODUCTS A Division of **FABCOR, Inc.**

350 South Ohio Street, P.O. Box 58
Minster, Ohio 45865
www.fabcor.com

Phone: (419) 628- 4428
Fax: (419) 628- 2899
E-mail: jails@fabcor.com

Equipment Assembly

EA-11.04

Revision C

©2003 Fabcor, Inc.

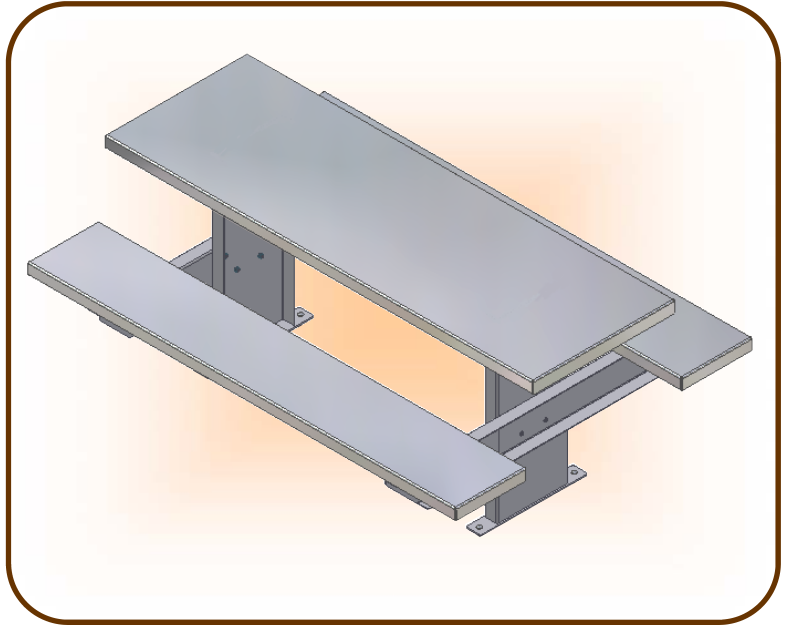
Picnic Table- Floor Mount– Stainless Steel Top and Seat Tops

TABLE

JCP Models

Description

J-1-3751	Two Seat Picnic Table
J-1-3752	Four Seat Picnic Table
J-1-3753	Six Seat Picnic Table (shown)
J-1-3754	Eight Seat Picnic Table
J-1-3761	Two Seat Picnic Table w/ Finish Paint
J-1-3762	Four Seat Picnic Table w/ Finish Paint
J-1-3763	Six Seat Picnic Table w/ Finish Paint
J-1-3764	Eight Seat Picnic Table w/Finish Paint
J-1-3771	Two Seat Picnic Table (full weld)
J-1-3772	Four Seat Picnic Table (full weld)
J-1-3773	Six Seat Picnic Table (full weld)
J-1-3774	Eight Seat Picnic Table (full weld)
J-1-3781	Two Seat Picnic Table (full weld) w/ Finish Paint
J-1-3782	Four Seat Picnic Table (full weld) w/ Finish Paint
J-1-3783	Six Seat Picnic Table (full weld) w/ Finish Paint
J-1-3784	Eight Seat Picnic Table (full weld) w/ Finish Paint



JCP Specifications: Picnic table top and seat tops are fabricated from 10 gauge stainless steel, and are 24” wide for the top and are 12” wide for the seats. The top is reinforced with a 11 gauge HRPO steel stabilizing channel down the middle of the top and an additional reinforcing channel where each leg connects to the top. The legs channels are fabricated from 10 gauge HRPO steel and are welded to base plates fabricated from 1/4” HRPO steel. The seat support channels are fabricated from 10 gauge HRPO steel. The table top height is 30” from the finished floor and the seats are 18” from the finished floor. All components receive one shop coat of our standard primer, excluding the stainless steel top and seat tops which will have a random orbital finish.

Picnic tables are shipped as separate components consisting of the top, (2) seats, (2) leg assemblies and (2) seat supports. The (20) 3/8-16 button head Torx® w/ pin security screws are also shipped separate for assembly by the installer.

Picnic tables specified as (full weld) will be completely welded together prior to shipping and shipped as one unit. All assembly screws are deleted to allow full welding of all components. Note that shipping fully welded picnic table will increase the shipping costs to the jobsite and may be difficult to move through the facility.

The two seat picnic table is 24” long.

The four seat picnic table is 48” long.

The six seat picnic table is 72” long.

The eight seat picnic table is 96” long.

Picnic tables specified to receive finish paint will receive one shop coat of our standard primer and one shop coat of standard finish paint with a textured finish, excluding the stainless steel top and seat tops which will have a random orbital finish.. Finish paint color will be from our standard finish paint color palette.

Note: Floors must be flat and true within 1/16” +/- for the proper installation of the picnic table. Installer to furnish and install the eight mushroom head spikes to secure the picnic table to the floor. Special picnic table sizes, gauges, or construction may be available on a per project basis for additional cost, please contact a JCP estimator for pricing and availability.

JAILS CORRECTIONAL PRODUCTS A Division of **FABCOR, Inc.**

350 South Ohio Street, P.O. Box 58
Minster, Ohio 45865
www.fabcor.com

Phone: (419) 628- 4428
Fax: (419) 628- 2899
E-mail: jails@fabcor.com

Equipment Assembly

EA-11.05

Revision C

©2003 Fabcor, Inc.

JCP Models Description

- J-7-0501 Manual Slider (for door openings up to 30" wide– requires 60" housing length)
- J-7-0502 Manual Slider (for door openings up to 36" wide– requires 72" housing length)
- J-7-0503 Manual Slider (for door openings up to 42" wide– requires 84" housing length)
- J-7-0504 Manual Slider (custom sizing)
- J-7-0505 Manual Slider w/ Finish Paint (for door openings up to 30" wide– requires 60" housing length)
- J-7-0506 Manual Slider w/ Finish Paint (for door openings up to 36" wide– requires 72" housing length)
- J-7-0507 Manual Slider w/ Finish Paint (for door openings up to 42" wide– requires 84" housing length)
- J-7-0508 Manual Slider w/ Finish Paint (custom sizing)



JCP Specifications: The JCP manual slider consists of a 7-gauge HRPO steel housing mounting bracket with a 10-gauge HRPO steel housing cover over the entire length of the housing. The 12-gauge HRPO steel end caps with mounting holes for the housing cover are welded to the housing mounting bracket. The housing is secured with Torx® w/ pin security screws.

The track is Hardkote® anodized aluminum with a Teflon® coating that mounts directly to the housing mounting bracket. Two aluminum cars with recirculating Torlon® ball bearings are attached to the track and can not be removed unless the track is dismantled. The cars provide long life maintenance free operation without the normal wear of steel tracks and rollers. Each car provides a minimum of 2300 lbs. of safe working load and a minimum of 5000 lbs. of breaking strength, which is far beyond the needs of this application.

Attached to the cars and welded to the top of the door is the 7-gauge HRPO steel two piece door hanger. Adjustment screws help to level the door over the entire length of travel. The door hanger also incorporates a welded stop that prevents the door hanger from hitting the end of the housing. All of the above materials are shipped assembled and the HRPO steel will receive one shop coat of primer.

Shipped separate is the rubber bumper assembly that works with the door hanger to stop the open door travel. The installation team welds this assembly to the housing mounting bracket in the field. The bottom door guide consists of a cam follower assembly with Lubri-Disc® seals to ensure maintenance free operation. The bottom of the door must be constructed with a channel for the cam follower guide to be inserted by the field installer who will also weld the door guide to the frame.

Manual sliders specified to receive finish paint will receive one shop coat of our standard primer and one shop coat of our standard finish paint with a textured finish. Finish paint color will be from our standard finish paint color palette.

Note: Walls must be true and plumb within 1/16" +/- for the proper installation and operation of the JCP manual slider. The door strike, frame, door and other hardware are not included. Special requirements for door construction must be sent to the door manufacturer to ensure proper operation of this unit and other hardware. Installation, welding and adjustment needs to be preformed by a crew that has correctional equipment installation experience.

Please refer to JCP catalog section HA-01.02 for optional accessories for the manual sliders.

Always verify that you have the correct templates and wiring diagrams for your specific project.

JAILS CORRECTIONAL PRODUCTS A Division of **FABCOR, Inc.**

350 South Ohio Street, P.O. Box 58
Minster, Ohio 45865
www.fabcor.com

Phone: (419) 628- 4428
Fax: (419) 628- 2899
E-mail: jails@fabcor.com

Hardware Assembly

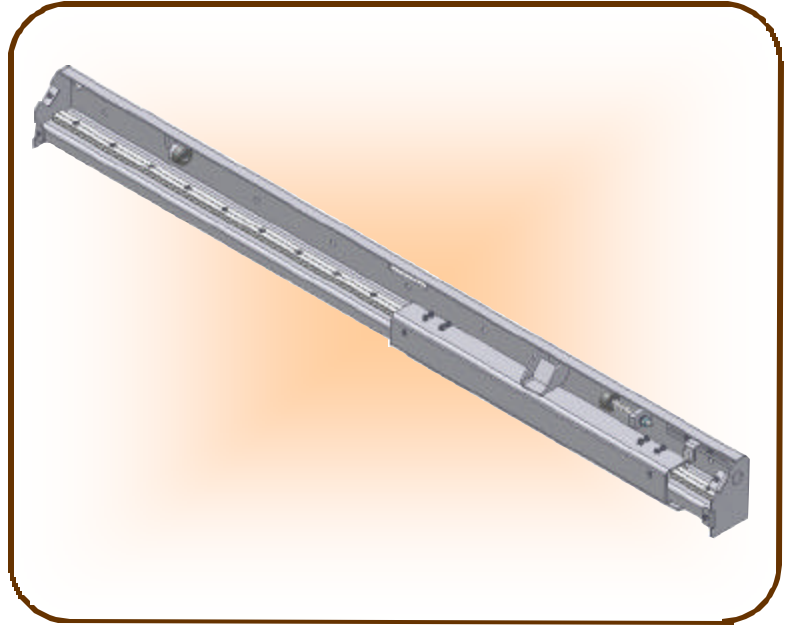
HA-01.01

Revision C

©2003 Fabcor, Inc.

JCP Models Description

J-7-0511	Manual Slider Internal Indication
J-7-0512	Manual Slider Door Starter
J-7-0513	Manual Slider External Indication
J-7-0514	Manual Slider Dummy Housing
J-7-0515	Manual Slider Dummy Housing w/ Finish Paint



JCP Specifications:

Manual Slider Internal Indication (J-7-0511)

The manual slider internal indication adds a bracket and limit switch in the manual slider housing to monitor if the door is in the closed position only. This option will not monitor if the lock bolt has been engaged. An additional indication switch should be specified with the lock hardware set in order for the control panel to indicate if the door is closed and locked. This option is recommended if the door is to be monitored by a control panel.

Manual Slider Door Starter (J-7-0512)

The manual slider door starter adds a bracket and a spring loaded stop in the manual slider housing to force the door open a few inches when the lock is disengaged either manually or by the control panel. This option is recommended if an electric lock has been specified in the hardware set.

Manual Slider External Indication (J-7-0513)

The manual slider external indication adds a green indication light to the exterior of the manual housing to indicate that the lock bolt has been engaged. An additional indication switch must be specified with the lock hardware set in order for the green light to indicate if the door lock bolt has been engaged. It is also recommended that the JCP manual slider internal indication (J-7-0511) be specified in order to indicate that the door is closed and locked.

Manual Slider Dummy Housing (J-7-0514 or J-7-0515)

The manual slider dummy housing consists of the housing bracket and cover specified for the manual slider with no internal mechanism. The dummy housing will vary in length to fill the gap between manual slider housings in a row to give a continuous housing appearance. The materials are shipped assembled and the HRPO steel will receive one shop coat of our standard primer (J-7-0514). Manual slider dummy housings specified to receive finish paint will receive one shop coat of our standard primer and one shop coat of our standard finish paint with a textured finish. Finish paint color will be from our standard finish paint color palette (J-7-0515).

Always verify that you have the correct templates and wiring diagrams for your specific project.

JAILS CORRECTIONAL PRODUCTS A Division of **FABCOR, Inc.**

350 South Ohio Street, P.O. Box 58
Minster, Ohio 45865
www.fabcor.com

Phone: (419) 628- 4428
Fax: (419) 628- 2899
E-mail: jails@fabcor.com

Hardware Assembly

HA-01.02

Revision C

©2003 Fabcor, Inc.

Door Position Switch- Surface Mount

DOOR POSITION

JCP Models

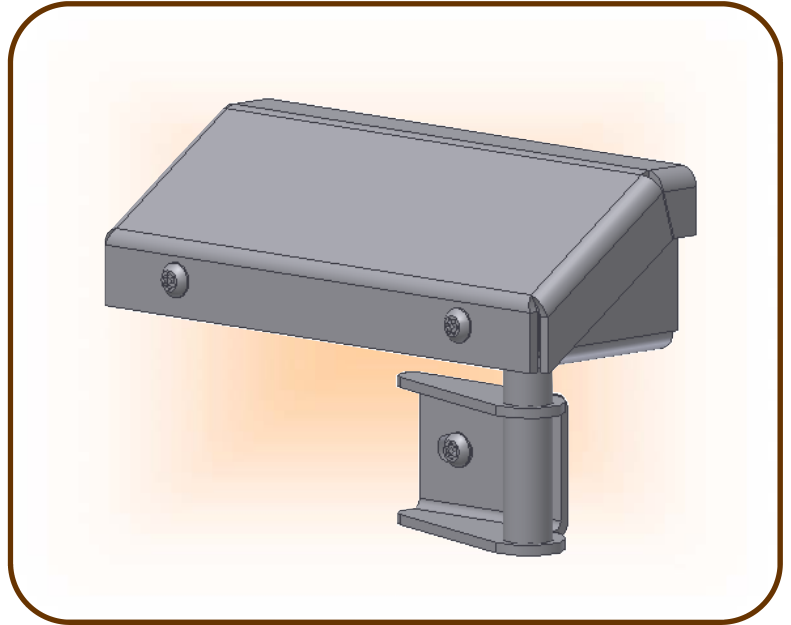
J-7-5001

Description

Surface Mount Door Position Switch for J-7-9001 Mortise Hinge (see JCP catalog page HA-04.01)

J-7-5002

Surface Mount Door Position Switch for J-7-9101 thru J-7-9106 Surface Hinge (see JCP catalog page HA-04.02)



JCP Specifications: The JCP surface mount door position switch consists of a 12 gauge HRPO housing and mounting bracket, with a 1/2" diameter solid bar actuator shaft. Overall size of the housing is 6-1/4" long, 2-7/32" deep, and 1-27/32" tall. The housing and mounting bracket is secured with Torx® w/ pin security screws.

The door position switch is non-handed and may require the installer to reverse the internal bracket to make the unit either right or left handed, and is designed to fit on a 2" frame header. The entire assembly, excluding the electrical components, will receive one shop coat of JCP standard primer. Field finish painting is by others.

This unit actuates a remote light indicator or other signaling device the moment the door is moved from the fully closed position. The switch rating is SPDT 15 amps at 125 VAC, or 5 amps at 24 VDC.

Installation requires the electrician to pull three wires to the unit and connect the wires directly to the internal switch. Verify that you have the correct door position switch for the hinges on the door and frame. Mount the housing to the frame with the provided non-security screws. The actuator bracket is mounted to the door with provided Torx® w/ pin security screws. Some adjustment and testing with the operational control system provided by others may be required prior to applying the housing cover. The only maintenance required to the unit is the manual adjustment of the switch if incorrect signals are reported to the control unit.

Always verify that you have the correct templates and wiring diagrams for your specific project.

JAILS CORRECTIONAL PRODUCTS A Division of **FABCOR, Inc.**

350 South Ohio Street, P.O. Box 58
Minster, Ohio 45865
www.fabcor.com

Phone: (419) 628- 4428
Fax: (419) 628- 2899
E-mail: jails@fabcor.com

Hardware Assembly

HA-02.01

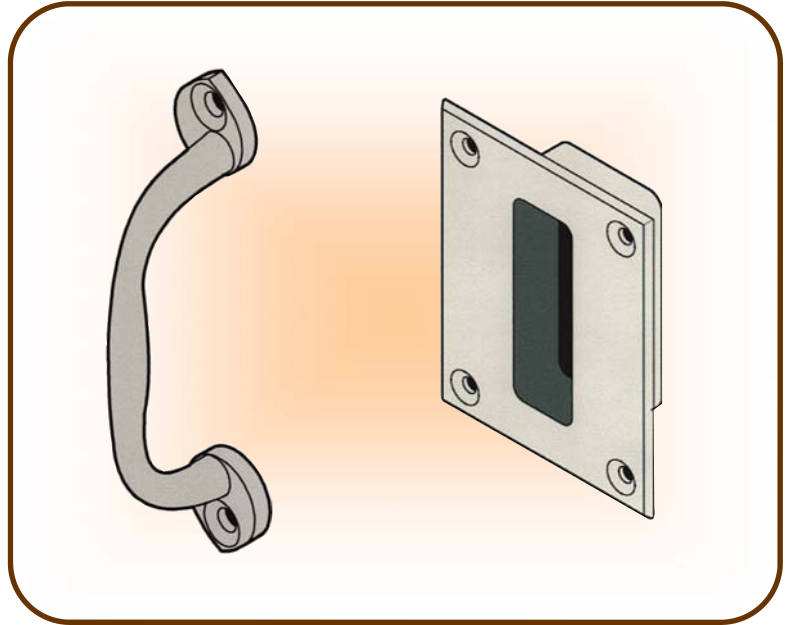
Revision C

©2003 Fabcor, Inc.

Pull– Surface Mount

PULL

<u>JCP Models</u>	<u>Description</u>
J-7-9501	Raised Pull x US32D
J-7-9502	Raised Pull x US4
J-7-9503	Recessed Pull x US32D



JCP Specifications: The JCP raised pull is 9” long, has a projection of 2-3/16”, and is supplied with Torx® w/ Pin security screws. The raised pull is available as an investment cast stainless steel unit in US32D finish, or investment cast brass unit in US4 finish.

The JCP recessed pull is 4” wide x 5” high x 1” deep, and is supplied with Torx® w/ pin security screws. The recessed pull is available only as an investment cast stainless steel unit in US32D finish.

Always verify that you have the correct templates for your specific project.



JAILS CORRECTIONAL PRODUCTS A Division of **FABCOR, Inc.**

350 South Ohio Street, P.O. Box 58
Minster, Ohio 45865
www.fabcor.com

Phone: (419) 628- 4428
Fax: (419) 628- 2899
E-mail: jails@fabcor.com

Hardware Assembly

HA-03.01

Revision C

©2003 Fabcor, Inc.

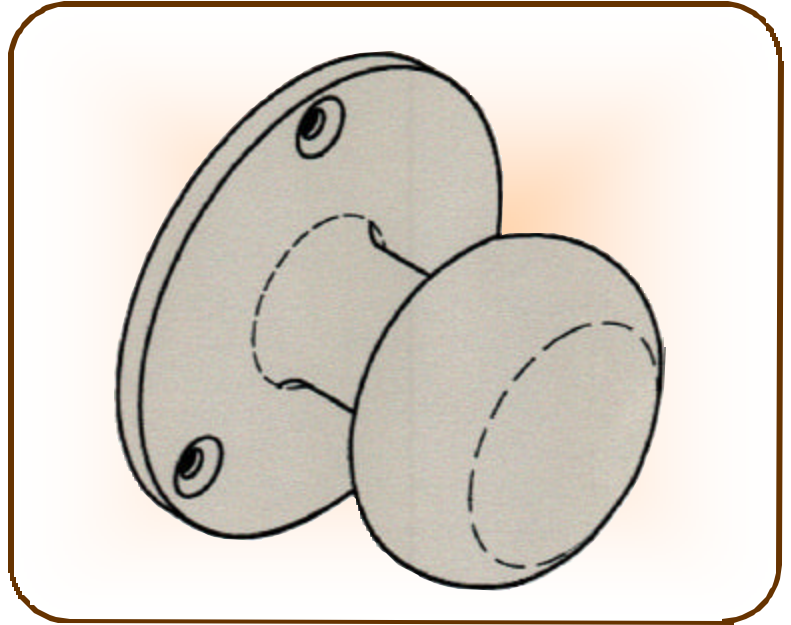
Pull– Surface Mount

PULL

JCP Models Description

J-7-9504 Knob Pull x US32D

J-7-9505 Knob Pull x US4



JCP Specifications: The JCP knob pull has a 2-1/4" diameter knob, a 3-1/4" diameter base, a projection of 2-1/4", and is supplied with 10-24 x 1/2" long Torx® w/ Pin security screws. The knob pull is available as an investment cast stainless steel unit in US32D finish, or investment cast brass unit in US4 finish.

Always verify that you have the correct templates for your specific project.



JAILS CORRECTIONAL PRODUCTS A Division of **FABCOR, Inc.**

350 South Ohio Street, P.O. Box 58
Minster, Ohio 45865
www.fabcor.com

Phone: (419) 628- 4428
Fax: (419) 628- 2899
E-mail: jails@fabcor.com

Hardware Assembly

HA-03.02

Revision C

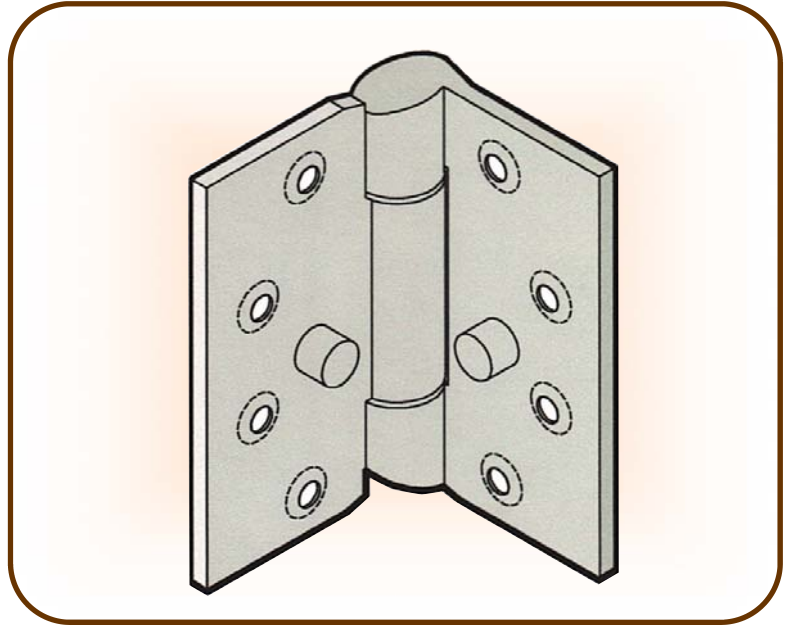
©2003 Fabcor, Inc.

Hinge- Mortise Mount

HINGE

JCP Models Description

J-7-9001 Mortise Hinge x US32D



JCP Specifications: The JCP mortise hinge is 4-1/2" x 4-1/2" x 3/16" thick investment cast stainless steel with a US32D finish and a security stud on each hinge leaf. The hinge has hospital tips, a stainless steel pin that is concealed and non-removable, and maintenance-free anti-friction bearings. The hinge is supplied with Torx® w/ pin security screws and meets ANSI/BHMA A156.7, NFPA 80, and the NAAMM standard HMMA 863-96.

Always verify that you have the correct template for your specific project.



JAILS CORRECTIONAL PRODUCTS A Division of **FABCOR, Inc.**

350 South Ohio Street, P.O. Box 58
Minster, Ohio 45865
www.fabcor.com

Phone: (419) 628- 4428
Fax: (419) 628- 2899
E-mail: jails@fabcor.com

Hardware Assembly

HA-04.01

Revision C

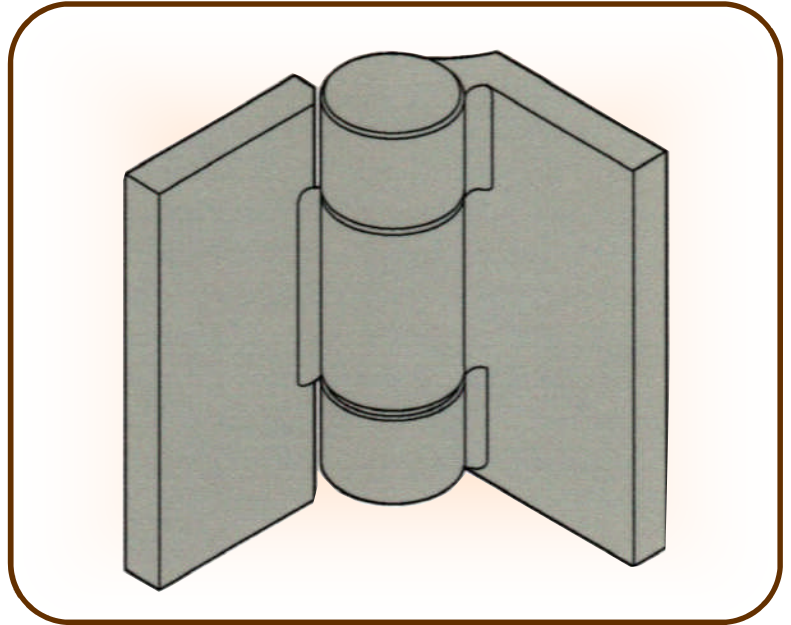
©2003 Fabcor, Inc.

Hinge– Surface Mount 5”

HINGE

JCP Models Description

J-7-9101	5” Full Surface Weld On Hinge x USP
J-7-9102	5” Full Surface Bolt On Hinge x USP
J-7-9105	5” Half Surface Weld On Hinge x USP
J-7-9106	5” Half Surface Bolt On Hinge x USP
J-7-9109	5” Gap Weld On Hinge x USP
J-7-9110	5” Gap Bolt On Hinge x USP



JCP Specifications: The JCP surface mount hinge is 5” high x 6” across the leaves and 1/2” thick cold rolled steel with a USP finish. The hinge has a hardened alloy steel pin that is concealed and non-removable, and a heavy-duty thrust and radial bearings. The hinge can be supplied as a weld on unit or can be provided with mounting holes, mounting bolts are not included and must be supplied by others. Short leaves are available as a special order product, please contact your sales representative for special ordering instructions.

Always verify that you have the correct template for your specific project.



JAILS CORRECTIONAL PRODUCTS A Division of **FABCOR, Inc.**

350 South Ohio Street, P.O. Box 58
Minster, Ohio 45865
www.fabcor.com

Phone: (419) 628-4428
Fax: (419) 628-2899
E-mail: jails@fabcor.com

Hardware Assembly

HA-04.02

Revision C

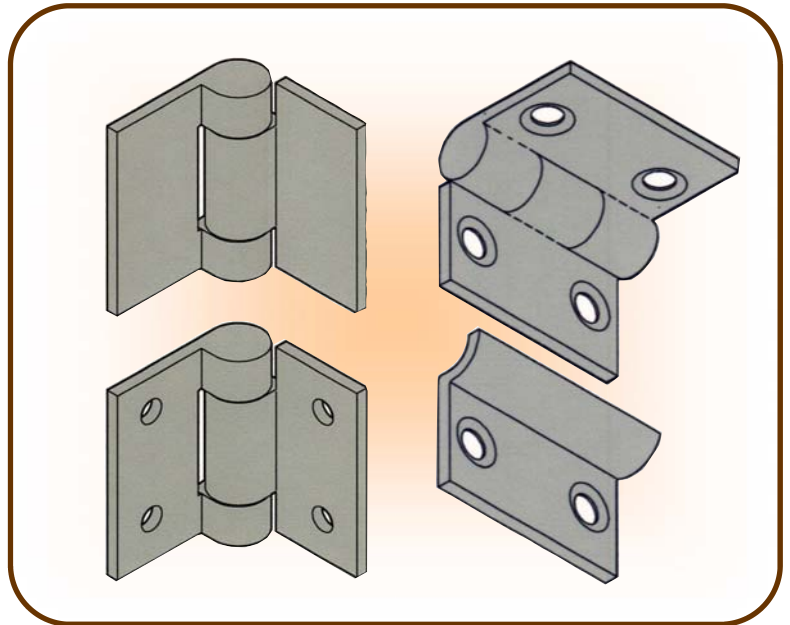
©2003 Fabcor, Inc.

Hinge– Surface Mount 3”

HINGE

JCP Models Description

J-7-9201	3” Full Surface Weld On Hinge x USP
J-7-9202	3” Full Surface Bolt On Hinge x USP
J-7-9203	3” Full Surface Bolt On Foodpass Hinge w/ Stop x USP

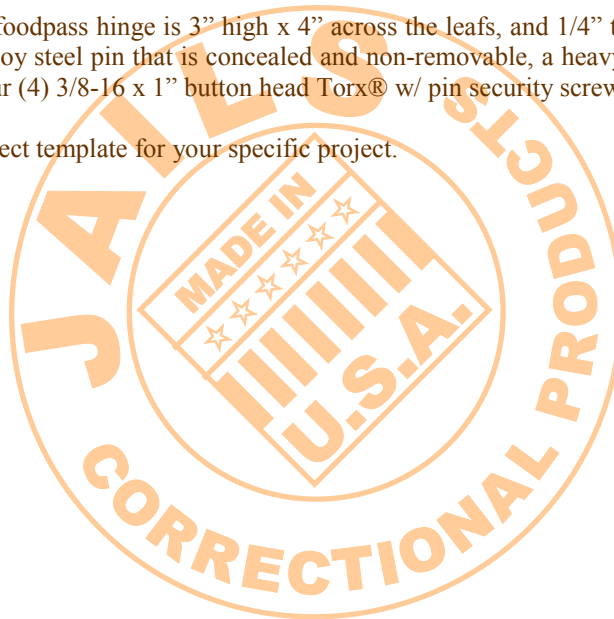


JCP Specifications: The JCP 3” full surface weld mount hinge is 3” high x 4” across the leafs, and 1/4” thick cold rolled steel with a USP finish. The hinge has a hardened alloy steel pin that is concealed and non-removable, and a heavy-duty bearings.

The JCP 3” full surface bolt mount hinge is 3” high x 4” across the leafs, and 1/4” thick cold rolled steel with a USP finish. The hinge has a hardened alloy steel pin that is concealed and non-removable, and a heavy-duty bearings. This hinge is supplied with four (4) 3/8-16 x 1” button head Torx® w/ pin security screws.

The JCP 3” full surface bolt mount foodpass hinge is 3” high x 4” across the leafs, and 1/4” thick cold rolled steel with a USP finish. The hinge has a hardened alloy steel pin that is concealed and non-removable, a heavy-duty bearings, and a 3/16” steel stop. This hinge is supplied with four (4) 3/8-16 x 1” button head Torx® w/ pin security screws.

Always verify that you have the correct template for your specific project.



JAILS CORRECTIONAL PRODUCTS A Division of **FABCOR, Inc.**

350 South Ohio Street, P.O. Box 58
Minster, Ohio 45865
www.fabcor.com

Phone: (419) 628- 4428
Fax: (419) 628- 2899
E-mail: jails@fabcor.com

Hardware Assembly

HA-04.03

Revision C

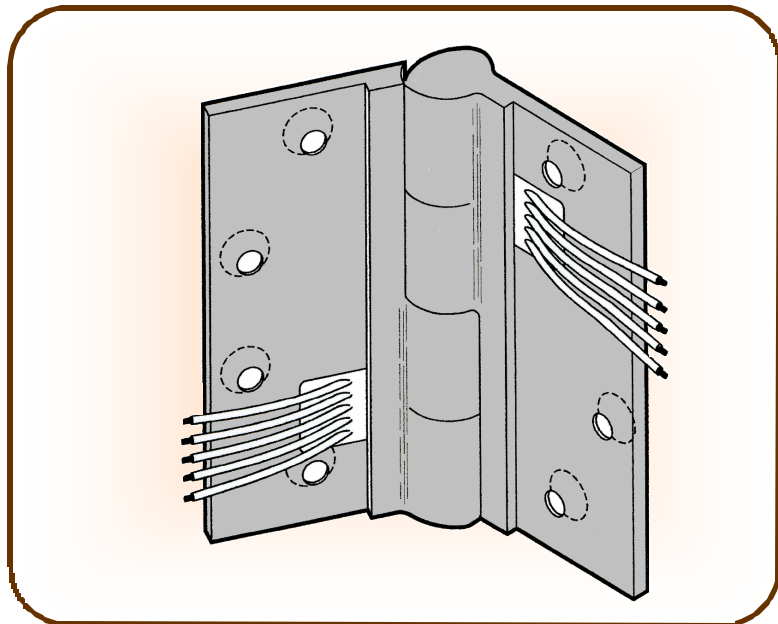
©2003 Fabcor, Inc.

Hinge- Mortise Electric Transfer Mount

HINGE

JCP Models **Description**

J-7-9301 Mortise Electric Transfer Hinge x
US32D



JCP Specifications: The JCP mortise electric transfer hinge is 4-1/2" x 4-1/2" x 3/16" thick investment cast stainless steel with a US32D finish. The hinge has hospital tips, is non-handed, reversible, and maintenance-free anti-friction bearings. The hinge is supplied with Torx® w/ pin security screws and meets ANSI/BHMA A156.7, NFPA 80, and the NAAMM standard HMMA 863-96. This hinge also has five (5) color coded 18 gauge UL® recognized wire. Note that this hinge is non-load bearing and requires additional hinge(s) to carry the load of the door.

Always verify that you have the correct template for your specific project.



JAILS CORRECTIONAL PRODUCTS A Division of **FABCOR, Inc.**

350 South Ohio Street, P.O. Box 58
Minster, Ohio 45865
www.fabcor.com

Phone: (419) 628- 4428
Fax: (419) 628- 2899
E-mail: jails@fabcor.com

Hardware Assembly

HA-04.04

Revision C

©2003 Fabcor, Inc.

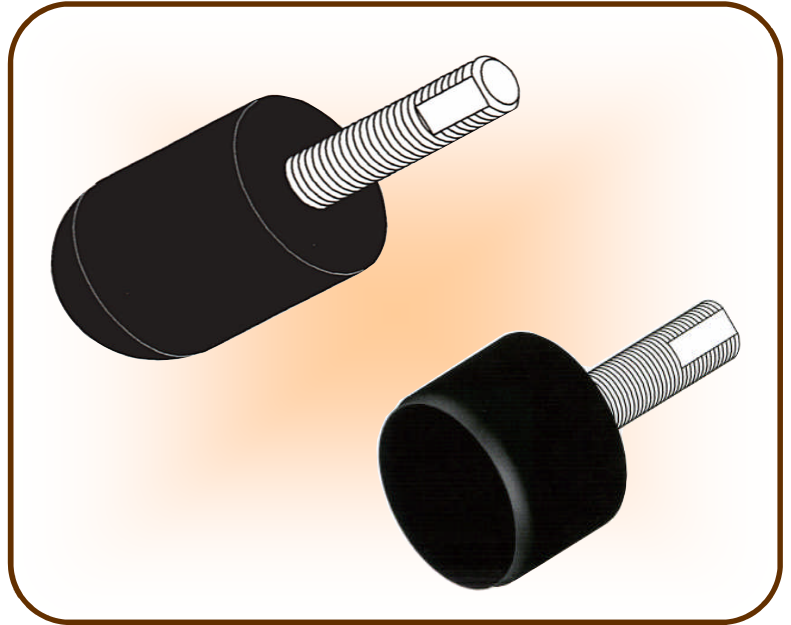
Stop– Wall or Floor Mount

STOP

JCP Models Description

J-7-8501 Wall or Floor Mount Stop (long)

J-7-8502 Wall or Floor Mount Stop (short)



JCP Specifications: The JCP stop has a 2” diameter black silicone rubber body with a 5/8”-11 x 2-1/2” long threaded steel post. The stop can be used as either a floor or wall stop by drilling a 3/4” diameter hole in the concrete floor slab or fully grouted concrete wall, injecting the two part epoxy into the hole and immediately inserting the stop. Note that the epoxy is by the installer. The J-7-8501 (long) stop has a 3-1/2” long rubber body and the J-7-8502 (short) stop has a 1-1/2” long rubber body.

Always verify that you have the correct template for your specific project.



JAILS CORRECTIONAL PRODUCTS A Division of **FABCOR, Inc.**

350 South Ohio Street, P.O. Box 58
Minster, Ohio 45865
www.fabcor.com

Phone: (419) 628-4428
Fax: (419) 628-2899
E-mail: jails@fabcor.com

Hardware Assembly

HA-05.01

Revision C

©2003 Fabcor, Inc.

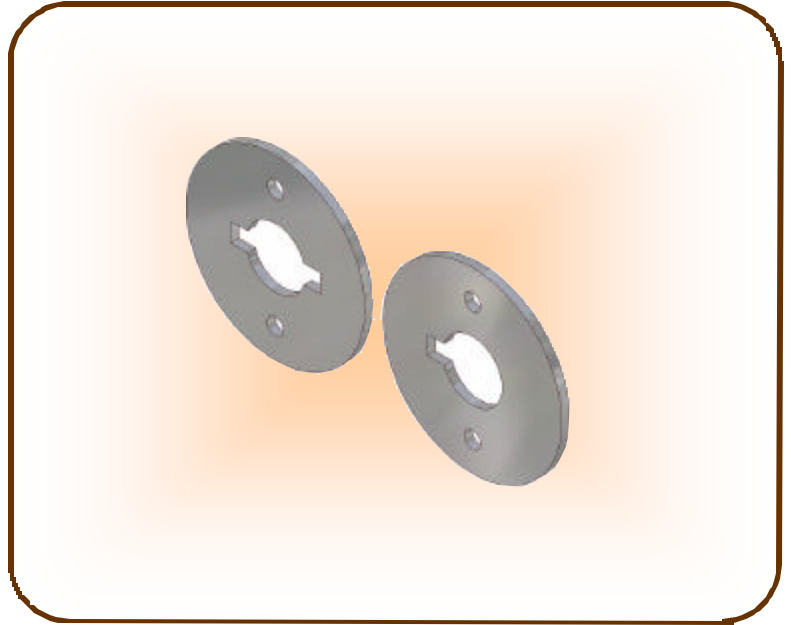
Escutcheon- Surface Mount

ESCUTCHEON

JCP Models Description

J-7-8601 Escutcheon– Double Winged x US32D
(shown on left)

J-7-8602 Escutcheon– Single Winged x US32D
(shown on right)



JCP Specifications: The JCP escutcheon is 3” in diameter x 10 gauge stainless steel with a random orbital finish. The application for the escutcheon is to prevent wear around a paracentric key cylinder and to help guide the insertion of the paracentric key into the cylinder. The escutcheon is provided with two (2) Torx® w/ pin security screws. Escutcheons are either double winged for keys that are to be removed in both positions, or single winged for keys that are to be removed only in the locked position as required by the lock function.

Always verify that you have the correct templates for your specific project.



JAILS CORRECTIONAL PRODUCTS A Division of **FABCOR, Inc.**

350 South Ohio Street, P.O. Box 58
Minster, Ohio 45865
www.fabcor.com

Phone: (419) 628- 4428
Fax: (419) 628- 2899
E-mail: jails@fabcor.com

Hardware Assembly

HA-06.01

Revision C

©2003 Fabcor, Inc.